

Astro Trend

© 2021 Norm Winski

OCTOBER 2021

43RD ANNIVERSARY ISSUE

Norm Winski

6457 Autumn Woods Blvd.
Naples, Florida 34109

[239] 594-3939

Skype: nwinski_1

nwinski@embargmail.com

All of the material contained herein is the sole opinion of Norm Winski, the publisher of Astro-Trend Publication. Norm Winski will not be held responsible for accidental oversights, typos, or incorrect information from any sources that generate any of the opinions and comments found in this publication. Futures, Options on futures, and Forex trading carry significant risk, and is not for every investor..Only risk capital should be used. Past performance is not necessarily indicative of future results. Any person who chooses to use this information as a basis for any of their trading assumes all the liability and risk for themselves and hereby and absolutely agrees to indemnify and hold harmless Norm Winski. Risk may be more than the funds deposited in a trading account.

OCTOBER 2021



MARKET WATCH

This month's letter covers October 4th through October 31st.

The October major planetary events can be sorted into five segments.

Editor's Note: Please assume Stocks are affected by all listed events, unless stated otherwise.

1. A. 10/01 AC – Venus Aphelion. Major change in trend Cattle, Copper, Corn, Cotton, Gold, OJ, Sugar, Wheat.
B. 10/05 AC – Jupiter Parallel Latitude Neptune. Major change in trend COMMODITY INDEX, Copper, Oats, and OIL
C. 10/05 AC – New Moon in Libra. Major change in trend Financials, Grains, Precious Metals and especially Sugar & Wheat.
D. 10/05 AC – Pluto in Capricorn turns Direct. Major change in trend Cocoa, Coffee, Hogs, and T-Bonds.
2. A. 10/10 AC – Saturn in Aquarius turns Direct. Major change in trend Coffee and Copper.
B. 10/10 AC – Jupiter 150 US Neptune. Moderate change in trend US Stocks, T-Bonds, US Dollar, & Oil.
C. 10/14 AC – Mercury 0 North Latitude. Major change in trend Corn, Oats, Soybeans, Wheat.
D. 10/15 AC - Neptune 90 US Mars. Major change in trend US Stocks, T-Bonds, US Dollar.
E. 10/15 AC – Jupiter in Aquarius turns Direct. Major change in trend Copper and Oats.
3. A. 10/18 AM – Mercury in Libra turns Direct. Major change in trend Corn, Oats, Soybeans, Sugar, and WHEAT.
B. 10/19 AM – Helio Saturn 90 Uranus. Major change in trend Coffee and COPPER.
C. 10/19 AC – Mercury Perihelion. Major change in trend CORN, Gold, Oats, OJ, Soybeans, Wheat.
D. 10/20 AM - Full Moon in Aries. Major Change in Trend Financials, Grains, Precious Metals and especially Sugar and Wheat.
4. A. 10/22 AC – Mercury Greatest Elongation West. Major change in trend Corn, Oats, Soybeans, Wheat.
B. 10/22 AC – Jupiter 150 US Neptune. Moderate change in trend US Stocks, T-Bonds, US Dollar, & Oil.
C. 10/22 AC – Uranus 90 US MC. Major change in trend US Stocks, T-Bonds, US Dollar.

FUTURES AND OPTIONS TRADING IS NOT SUITABLE FOR ALL INVESTORS. THE RISK OF LOSS IS SUBSTANTIAL. AN INVESTOR COULD LOSE MORE THAN THE INITIAL INVESTMENT. PAST PERFORMANCE IS NOT NECESSARILY INDICATIVE FUTURE RESULTS.

5. A. 10/29 AC – Venus Greatest Elongation East. Major change in trend Cattle, Copper, Cotton, Sugar, Wheat.5

B. 10/29 AC – Pluto 90 US Mercury. Major change in trend US Stocks, T-Bonds, US Dollar.

C. 10/29 AC – Geo Mars enters Scorpio. Important change in trend Cocoa, Hogs, and T-Bonds.

MAJOR EVENTS

<u>Date</u>	<u>Events</u>	<u>Markets Effected</u>
10/01 AC	Venus Aphelion	Cattle, Copper, Corn, Cotton, Gold, OJ, Sugar, Wheat
10/05 AC	Jupiter Lat. Neptune	C.I. Copper, Oats, OIL, Soybeans OJ, Soybeans, Wheat
10/05 AC	New Moon/Libra	Financls, Grains, Prec.Metals, Sugar
10/05 AC	Pluto/Capricorn Direct	Cocoa, Coffee, Hogs, T-Bonds
10/10 AC	Saturn/Aquarius Direct	Coffee, Copper
10/10 AC	Jupiter 150 US Neptune	Stocks, T-Bonds, US \$, Oil
10/14 AC	Mercury 0 North Latitude	Corn, Oats, Soybeans, Wheat
10/15 AC	Neptune 90 US Mars	Stocks, T-Bonds, US \$
10/15 AC	Jupiter/Aquarius Direct	Copper, Oats
10/18 AM	Mercury/Libra Direct	Corn, Oats, Soybeans, Sugar, WHEAT
10/19 AM	Helio Saturn 90 Uranus	COPPER, Coffee
10/19 AC	Mercury Perihelion	Corn, Oats, Soybeans, Wheat
10/20 AM	Full Moon/Aries	Financials, Grains, Precious Metals, Sugar, Wheat
10/22 AC	Mercury Grt. Elong. W.	Corn, Oats, Soybeans, WHEAT
10/22 AC	Jupiter 150 US Neptune	Stocks, T-Bonds, US \$, Oil
10/22 AC	Uranus 90 US MC	Stocks, T-Bonds, US \$
10/29 AC	Venus Grt. Elong. E.	Cattle, Copper, Cotton, Sugar, Wheat
10/29 AC	Pluto 180 US Mercury	Stocks, T-Bonds, US \$
10/29 AC	Geo Mars > Scorpio	Cocoa, Hogs, T-Bonds

OCTOBER 2021 MARKET MONITOR LIST

The October planetary analysis indicates that the best areas to monitor this month are:

- 1) Stocks; 2) Wheat; 3) Oats; 4) T-Bonds; 5) Corn; 6) Soybeans; 7) US \$; 8) Oil; 9) CI/CRB;
- 10) Sugar; 11 tie) Cattle & Cotton; 12) Copper; 13 tie) Gold & OJ; 14) Coffee; 15) Silver; and
- 16 tie) Cocoa, Hogs.

FUTURES AND OPTIONS TRADING IS NOT SUITABLE FOR ALL INVESTORS. THE RISK OF LOSS IS SUBSTANTIAL. AN INVESTOR COULD LOSE MORE THAN THE INITIAL INVESTMENT. PAST PERFORMANCE IS NOT NECESSARILY INDICATIVE OF FUTURE RESULTS.

STOCKS

08/27 SPX CL 4509.37

10/01 SPX CL 4357.04

September Review – “During the past month, the S&P 500 zig zagged higher, to close 8/27 at a new all-time high. The top Astro dates and events for the coming month are: 8/27 AC – Venus 0 South Latitude, Neptune Contra-Parallel US Neptune; 9/03 AC – Mercury Aphelion, New Moon in Virgo, Helio Mars enters Libra; 9/09 AC – Saturn 180 US North Node and Pluto 180 US Mercury; 9/13 AC – Mercury Greatest Elongation East; 9/14 AC – Geo Mars enters Libra; 8/17 AC – Pluto Contra-Parallel and Helio Jupiter enters Pisces; 9/20 AC – Full Moon in Pisces; 9/24 AC - Mercury in Libra turns Retrograde; and 10/01 AC – Venus Aphelion.”

Results -**Market Math –**

9/16 – 575 days (Music Math) from the 2/19/20 major high.

9/17 – 576 days (24^2) from the 2/19/20 major high.

9/16 was very close in price and one day past a very good high. 9/17 was a pass.

Score – 1 out of 1 good dates = 100%

Fibonacci – 8/31, 9/9, 9/13, 9/20, 9/24

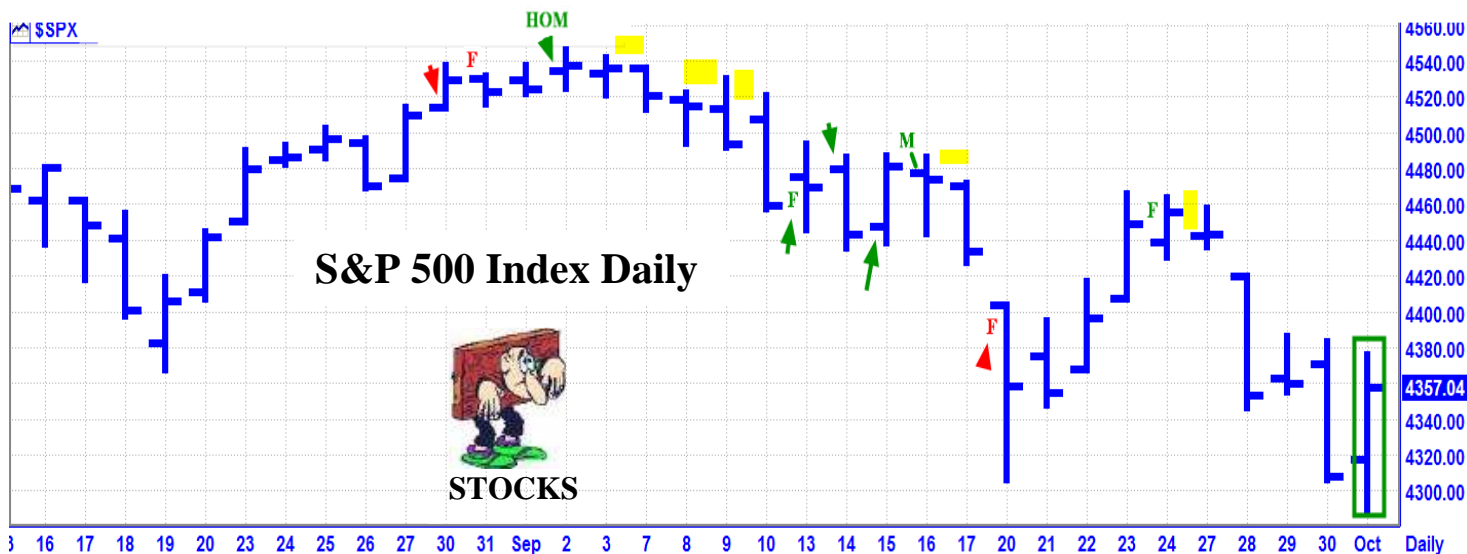
8/31 was not effective. 9/9 was a pass. 9/13 was close in price and one day past a low. 9/20 was not effective. due to the volatility risk. 9/24 was very close in price and one day past a very good high.

Score – 2 out of 4 good dates = 50%.

Astro – 8/30, 9/2, 9/7, 9/10, 9/13, 9/14, 9/15, 9/20, 9/27, 10/1 AC

8/30 was not effective. 9/2 was the exact high of the month, an all-time new high, and a very good high. 9/7, 9/10 and 9/27 were passes. 9/13 was a one day low. 9/14 was a one day high. 9/15 was a one day low. 9/20 was not effective due to volatility. Score – 4 out of 6 good dates = 66.67%.

Total Score – 7 out of 11 good dates = 63.64%



LEGEND: If it is **Green** it is a winner. If it is **Red** it is a miss. A **Green** encircled bar at the end of the month, is still open to evaluation due to a lack of time. **A Yellow Bar is a Pass.** Astro Date = Arrow. D = DJIA. Fibonacci = F. M = Market Math. N = NYSE. S = S&P. U = US Fed. B = BankEn/Fed. LOM = Low of the Month. HOM = High of the Month.

FUTURES AND OPTIONS TRADING IS NOT SUITABLE FOR ALL INVESTORS. THE RISK OF LOSS IS SUBSTANTIAL. AN INVESTOR COULD LOSE MORE THAN THE INITIAL INVESTMENT. PAST PERFORMANCE IS NOT NECESSARILY INDICATIVE OF FUTURE RESULTS.

Stocks continued -

October Update – October should be a volatile, wild and swinging month for the Stock Market with five Planetary Polarity Points plus several more major aspects. Following is a summary of the top ten events or windows: 10/05 AC – Jupiter Parallel Latitude Neptune, a New Moon, and Pluto turns Direct; 10/10 AC - Saturn turns Direct: 10/14 AC – Mercury 0 North Latitude; 10/15 AC – Neptune 90 US Mars and Jupiter turns Direct; 10/18 AM – Mercury turns Direct; 10/19 AM – Helio Saturn 90 Uranus; 10/19 AC – Mercury Perihelion and 10/20 AM – Full Moon; 10/22 AC – Mercury Greatest Elongation West and Uranus 90 US MC; 10/29 AC – Venus Greatest Elongation East, Pluto 180 US Mercury & Geo Mars enters Scorpio.

Near term, the Stock Market had a strong down trend for most of September. The rally on 10/1 into our 10/1 AC change in trend window suggest a high for Monday. If that is the case, there should be a decline into our huge 10/5 AC change in trend window. If the market rallies past Monday, then expect a rally high into 10/6.

Market Math –

10/6 – 4,597 Music Days from the 3/08/2009 major low.

Fibonacci – 10/6, 10/15, 10/18, 10/29

Astro – 10/4, 10/6, 10/11, 10/14, 10/15, 10/20, 10/25, 10/29 AC

T-BONDS

08/27 ZB Z21 CL 162-30

10/01 ZB Z21 CL 160-14

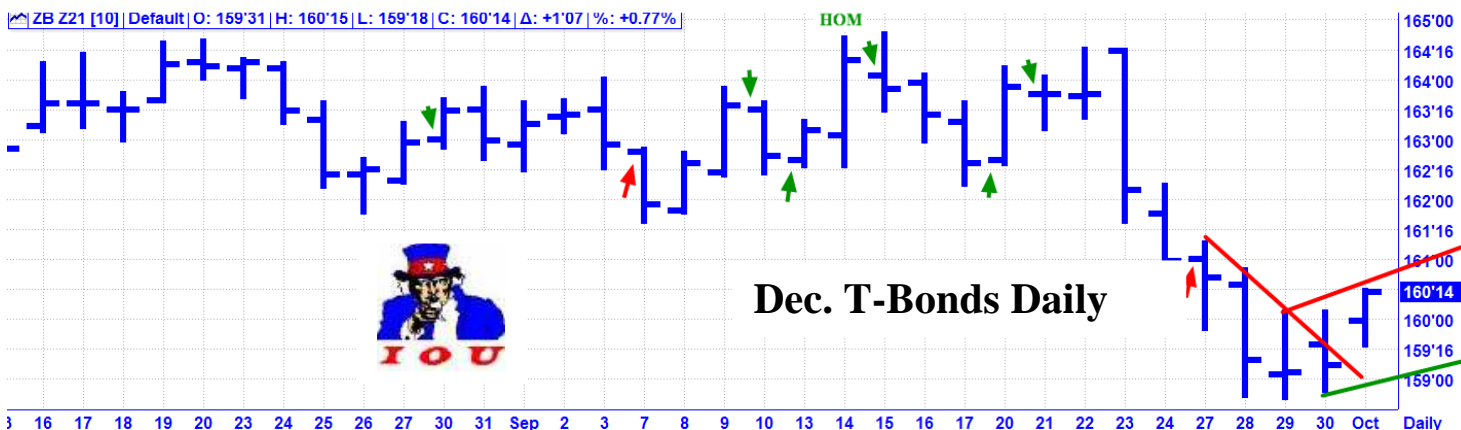
September Review – “T-Bonds have been trading in a wide sideways trading range for the past month. This month, there are several major aspects to the US chart and the US chart is one of the Astrological keys for T-Bonds. The top Astro events for the coming month are: 8/27 AC – Neptune Contra-Parallel US Neptune; 9/3 AC – New Moon in Virgo; 9/9 AC – Saturn 180 US North Node and Pluto 180 US Mercury; 9/17 AC – Pluto Contra-Parallel US Sun; and 9/20 AC – Full Moon in Pisces.

Key Dates – 8/30, 9/7, 9/10, 9/13, 9/16, 9/20, 9/21, 9/27, 10/1 AC”

Results – 8/30 was close in price and one day ahead of a short term high. 9/7 was not effective. 9/10 was very close in price and one day past a short term high. 9/13 was very close in price and one day past a good low. 9/16 was very close in price, one day past the high of the month, and a good high. 9/20 was very close in price and one day past a good low. 9/21 was very close in price and one day ahead of a very good high. 9/27 was not effective due to volatility. Score – 6 out 8 good dates = 75%.

October Update – T-Bonds had a sharp decline in the third week of September and then a small bounce into the 10/1 weekend. The top Astro events for T-Bonds this month are: 10/5 AC – Pluto turns Direct. Pluto is a planetary ruler for Bonds; 10/15 AC – Neptune 90 US Mars; 10/22 AC – Uranus 90 US MC; and Geo Mars enters Scorpio. The US chart is a major factor for T-Bonds. Scorpio is the ruling sign for Bonds.

Key Dates – 10/4, 10/6, 10/8, 10/11, 10/15, 10/18, 10/20, 10/25, 10/29 AC



FUTURES AND OPTIONS TRADING IS NOT SUITABLE FOR ALL INVESTORS. THE RISK OF LOSS IS SUBSTANTIAL. AN INVESTOR COULD LOSE MORE THAN THE INITIAL INVESTMENT. PAST PERFORMANCE IS NOT NECESSARILY INDICATIVE OF FUTURE RESULTS.

US DOLLAR

08/27 DX Z21 CL 92.695

10/01 DX Z21 CL 94.095

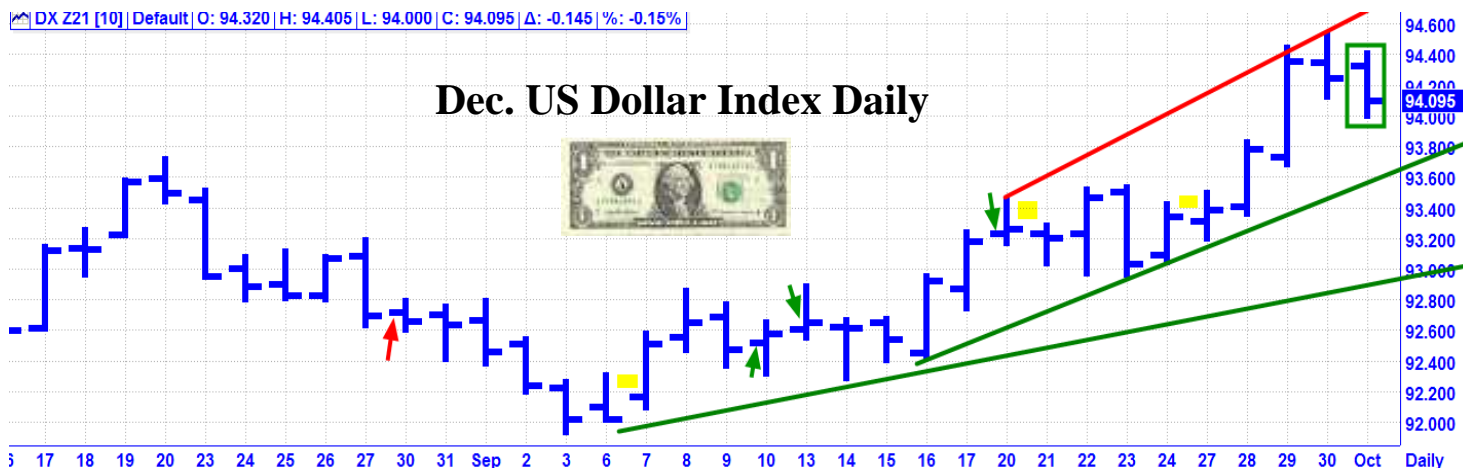
September Review – “The Dollar Index had a moderate up trend for most of August. This month, there are several major aspects to the US chart and the US chart is one of the Astrological keys for the US Dollar. The top Astro events for the coming month are: 8/27 AC – Neptune Contra-Parallel US Neptune; 9/3 AC – New Moon in Virgo; 9/9 AC – Saturn 180 US North Node and Pluto 180 US Mercury; 9/17 AC – Pluto Contra-Parallel US Sun; and 9/20 AC – Full Moon in Pisces. Key Dates – 8/30, 9/7, 9/10, 9/13, 9/20, 9/21, 9/27, 10/1 AC”

Results – 8/30 was not effective. 9/7, 9/21, and 9/27 were passes. 9/10 was a one day low. 9/13 was a short term high. 9/20 was a short term high. Score – 3 out of 4 good dates = 75%.

October Update – The US Dollar Index had a good uptrend for most of September. The top Astro events for the US Dollar are 10/6 – New Moon; 10/15 AC – Neptune 90 US Mars; 10/20 – Full Moon; and 10/22 AC – Uranus 90 US MC. The lunar cycle and the US chart are major factors for the US Dollar.

Key Dates – 10/4, 10/6, 10/22, 10/15, 10/18, 10/20, 10/25

[DX Z21 \[10\]](#) | Default | O: 94.320 | H: 94.405 | L: 94.000 | C: 94.095 | Δ: -0.145 | %: -0.15%



EURO

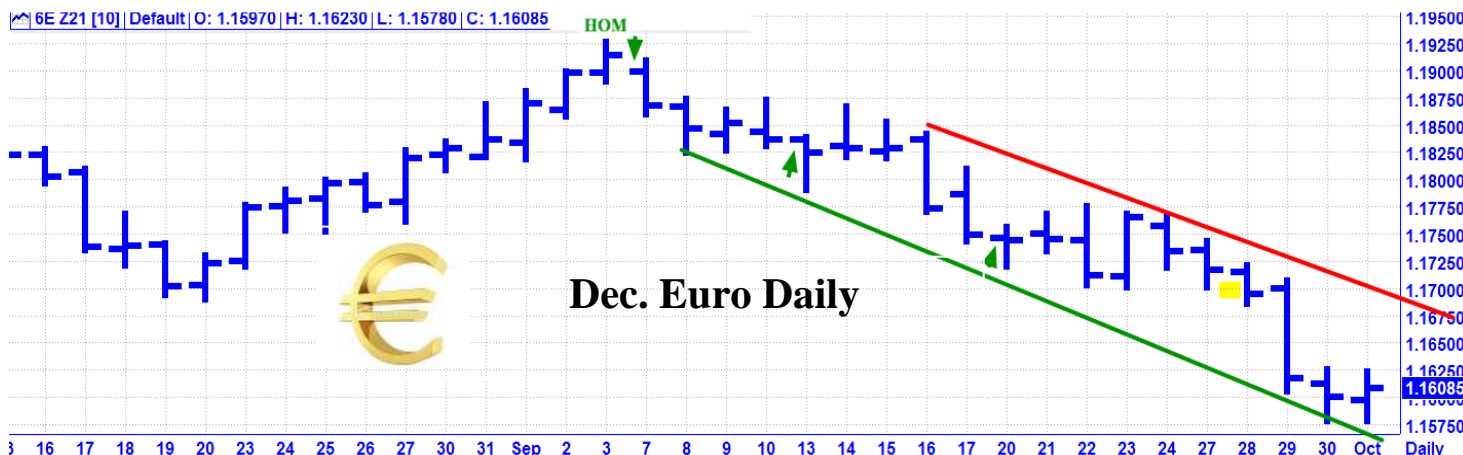
08/27 6E Z21 CL 1.18190

10/01 6E Z21 CL 1.16085

September Review Only – “The Euro is back on our Astro radar. The Euro had a rally into the 8/27 weekend. Key Dates – 9/7, 9/13, 9/20, 9/28”

Results – 9/7 was very close in price and one day past the high of the month. 9/13 was a one day low. 9/20 was a short term low. 9/28 was a pass. Score – 3 out of 3 good dates = 100%.

[6E Z21 \[10\]](#) | Default | O: 1.15970 | H: 1.16230 | L: 1.15780 | C: 1.16085



FUTURES AND OPTIONS TRADING IS NOT SUITABLE FOR ALL INVESTORS. THE RISK OF LOSS IS SUBSTANTIAL. AN INVESTOR COULD LOSE MORE THAN THE INITIAL INVESTMENT. PAST PERFORMANCE IS NOT NECESSARILY INDICATIVE OF FUTURE RESULTS.

COMMODITY INDEX - CRB

08/27 CRB CL 219.18

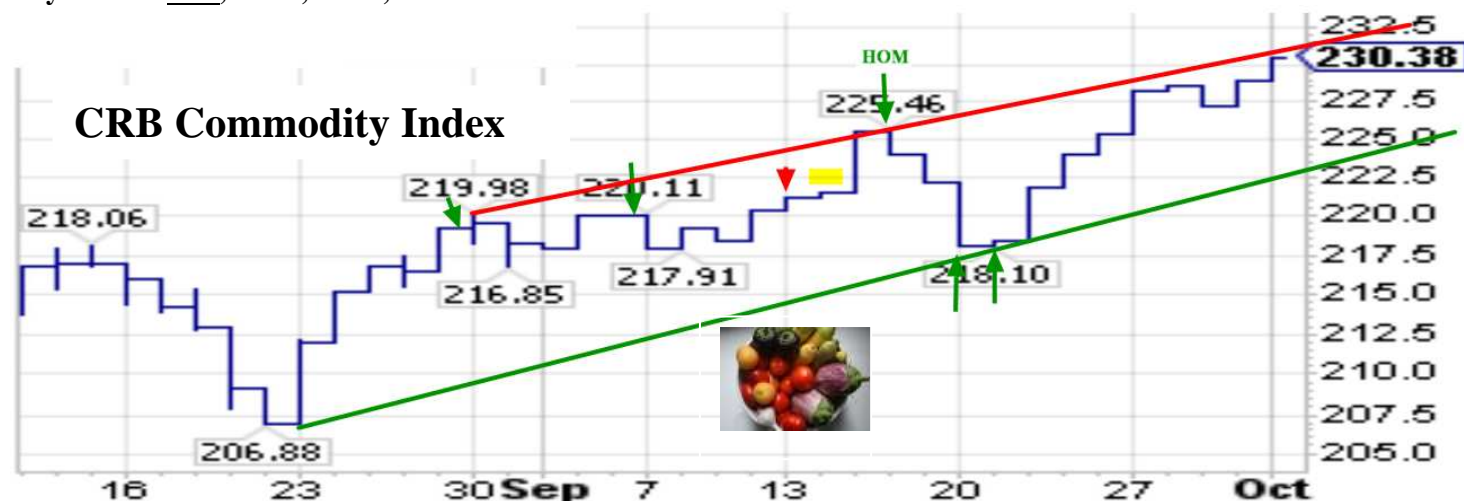
10/01 CRB CL 230.38

September Review – “The CRB traded in a wide trading range for most of August and finished 8/27 near its high. Neptune and Pisces are the key factors for the CRB. Two major events for the CRB this month are 8/27 AC – Neptune Contra-Parallel US Neptune and 9/17 AC – Helio Jupiter will enter Pisces. Key Dates – 8/30, 9/7, 9/13, 9/14, 9/16, 9/20, 9/21”

Results – 8/30 was a short term high. 9/7 was a short term high. 9/13 was not effective. 9/14 was a pass. 9/16 was the exact high of the month and a very good high. 9/20 was a very good low. 9/21 was very close in price and one day past the 9/20 low. Score – 5 out of 6 good dates = 83.33%

October Update – The CRB had a strong move up for most of September. This reflects the current trend for inflation. The top three Astro events for October are: 10/5 AC – Jupiter Parallel Latitude Neptune and a New Moon; and 10/20 AC Full Moon.

Key Dates – 10/6, 10/14, 10/20, 10/28

CRUDE OIL

08/27 CL Z21 CL 68.11

10/01 CL Z21 CL 75.45

September Review – “Oil had a big down move into our 8/23 key date, which was the low of the month. From that low, Oil had a sharp rally into the 8/27 weekend. Neptune and Pisces are the key factors for Crude Oil. Two major events for the CRB this month are 8/27 AC – Neptune Contra-Parallel US Neptune and 9/17 AC – Helio Jupiter will enter Pisces. Key Dates – 8/30, 9/3, 9/7, 9/13, 9/14, 9/16, 9/17, 9/20, 9/29”

Results – 8/30 was a short term high. 9/3 was very close in price and one day past a good high. 9/7 and 9/13 were not effective. 9/14 was a pass. 9/16 was very close in price, one day past the high of the month and a good high. 9/17 and 9/20 were passes. 9/29 was close in price and one day ahead of a short term low. Score – 4 out of 6 good dates = 66.67%.

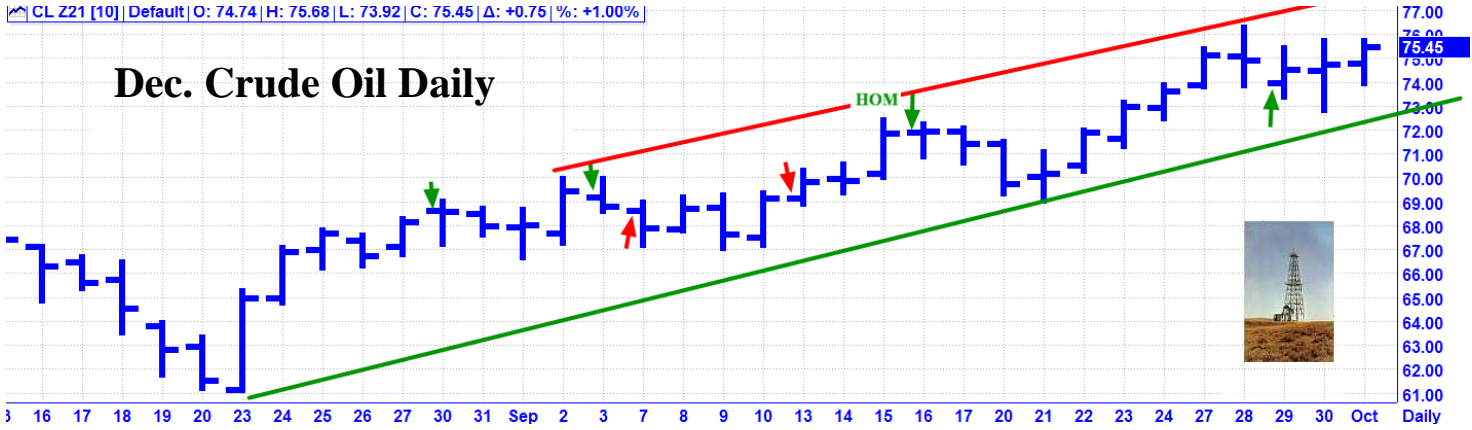
October Update – Crude Oil had a steady and strong up trend for most of September. The top three Astro events for October are: 10/5 AC – Jupiter Parallel Latitude Neptune and a New Moon and 10/20 AC Full Moon.

Key Dates – 10/6, 10/14, 10/20, 10/28, 10/29 AC

FUTURES AND OPTIONS TRADING IS NOT SUITABLE FOR ALL INVESTORS. THE RISK OF LOSS IS SUBSTANTIAL. AN INVESTOR COULD LOSE MORE THAN THE INITIAL INVESTMENT. PAST PERFORMANCE IS NOT NECESSARILY INDICATIVE OF FUTURE RESULTS.

CL Z21 [10] | Default | O: 74.74 | H: 75.68 | L: 73.92 | C: 75.45 | Δ: +0.75 | %: +1.00%

Dec. Crude Oil Daily



COPPER

08/27 HG Z21 CL 4.3355

10/01 HG Z21 CL 4.2085

September Review – “Copper had a sharp down trend into an 8/19 low and then rebounded about 50% into the 8/27 weekend. Key Date – 8/30, 9/7, 9/13, 9/16, 9/27, 10/1 AC”

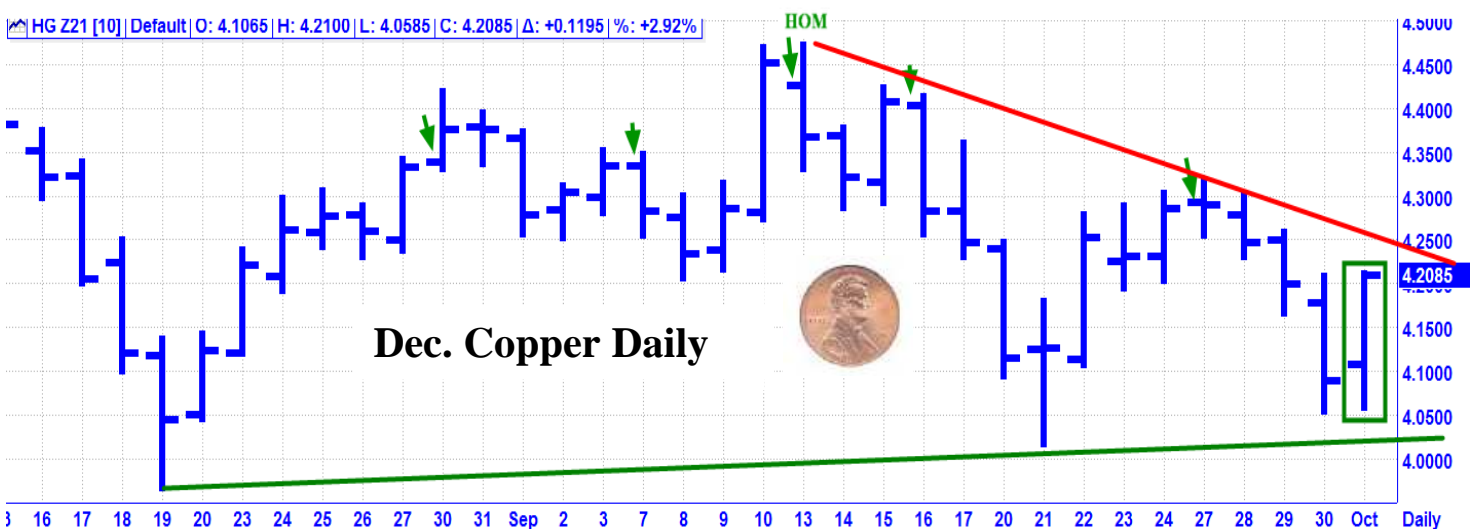
Results – 8/30 was a short term high. 9/7 was a short term high. 9/13 was the exact high of the month. 9/16 was a very good high. 9/27 was a good high. Score – 5 out of 5 good dates = 100%.

October Update – During the past month, Copper traded in a wide trading range with a downward bias into the end of the month. The top Astro events for Copper this month are : 10/5 AC – Jupiter in Aquarius Parallel Latitude Neptune; 10/10 AC – Saturn in Aquarius turns Direct; 10/15 AC – Jupiter in Aquarius turns Direct; 10/19 AM – Helio Saturn 90 Uranus; and 10/29 AC – Venus Greatest Elongation East. Aquarius is the ruling sign for Copper. Uranus and Venus are Copper’s co-ruling planets.

Key Date – 10/6, 10/11, 10/14, 10/18-19, 10/29 AC

HG Z21 [10] | Default | O: 4.1065 | H: 4.2100 | L: 4.0585 | C: 4.2085 | Δ: +0.1195 | %: +2.92%

Dec. Copper Daily



FUTURES AND OPTIONS TRADING IS NOT SUITABLE FOR ALL INVESTORS. THE RISK OF LOSS IS SUBSTANTIAL. AN INVESTOR COULD LOSE MORE THAN THE INITIAL INVESTMENT. PAST PERFORMANCE IS NOT NECESSARILY INDICATIVE OF FUTURE RESULTS.

SILVER

08/27 SI Z21 CL 24.080

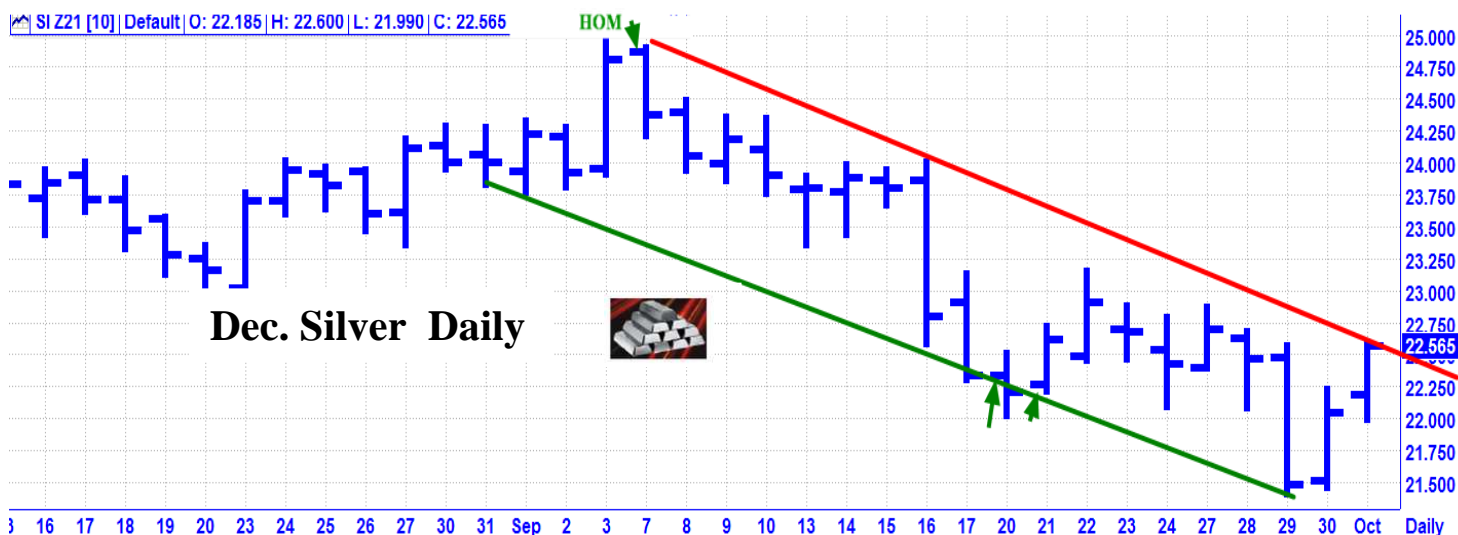
10/01 SI Z21 CL 22.555

September Review – “Silver had a sharp down move into an 8/9 low and then traded in a mostly sideways range. An important event for Silver this month will be 9/17 AC – Helio Jupiter enters Pisces. Pisces is a harmonic aspect to Cancer, which is the ruling sign for Silver. Key Dates – 9/7, 9/20, 9/21”

Results – 9/7 was very close in price, one day past the high of the month, and a very good high. 9/20 was a good low. 9/21 was very close in price and one day past the 9/20 low. Score – 3 out of 3 good dates = 100%

October Update – Silver made a high near the New Moon in early September. From there, it was down sharply for most of the month. Silver has now rallied to the top of its trading channel. However, there is a New Moon coming on 10/5 AC. Will this be a high or a low for Silver? Stay tuned Silver fans.

Key Dates – 10/6, 10/20

GOLD

08/27 GC Z21 CL 1820.5

10/01 GC Z21 CL 1761.30

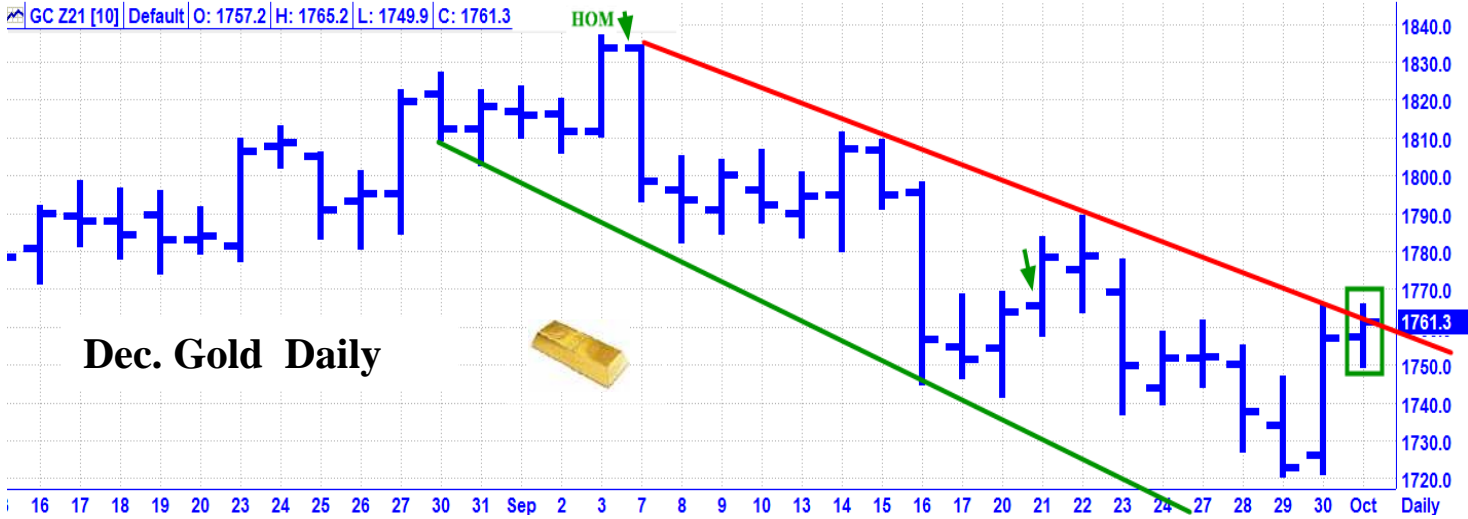
September Review – “Gold made a big spike low on 8/9 and then recovered most of its losses for the month via a rally into the 8/27 weekend. Key Dates – 9/7, 9/21, 10/1 AC”

Results – 9/7 was very close in price and one day past the high of the month. 9/21 was close in price and one day ahead of a good high. Score – 2 out of 2 good dates = 100%.

October Update – Gold made a high near the New Moon in early September. From there, it was down sharply for most of the month. Gold has now rallied to the top of its trading channel. However, there is a change in trend due on 10/4 and a New Moon coming on 10/5 AC. Stay tuned!

Key Dates – 10/4, 10/6, 10/20

FUTURES AND OPTIONS TRADING IS NOT SUITABLE FOR ALL INVESTORS. THE RISK OF LOSS IS SUBSTANTIAL. AN INVESTOR COULD LOSE MORE THAN THE INITIAL INVESTMENT. PAST PERFORMANCE IS NOT NECESSARILY INDICATIVE OF FUTURE RESULTS.



OJ

08/27 JO X21 CL 146.70

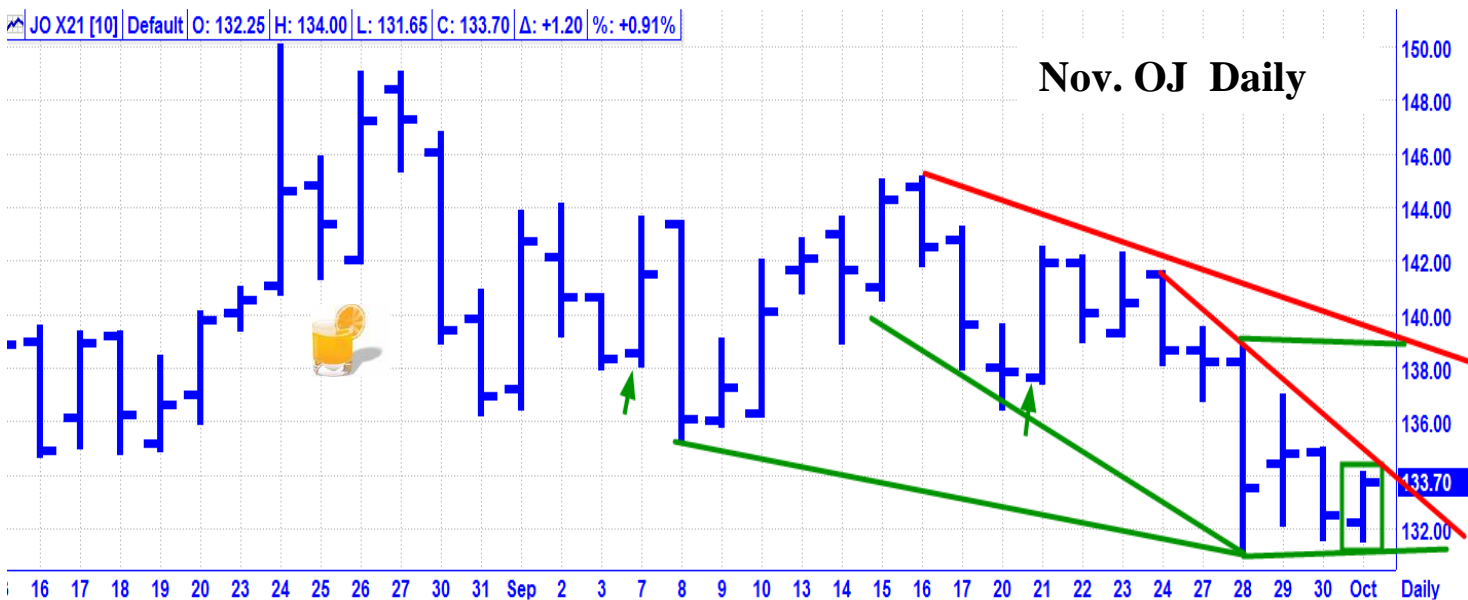
10/01 JO X21 CL 133.70

September Update – “OJ had an uptrend for most of August, finishing into the 8/27 weekend near the high of the month. Key Dates – 9/7, 9/21, 10/1 AC”

Results – 9/7 was very close in price and one day past a short term low. 9/21 was very close in price and one day past a short term low. Score – 2 out of 2 good trades = 100%.

October Update – OJ traded in a wide trading range into mid-month and turned lower into the end of September. This market seems to be basing for a low. There is a change in trend due on 10/4 and a New Moon coming on 10/5 AC. Stay tuned!

Key Dates – 10/4, 10/6, 10/20



FUTURES AND OPTIONS TRADING IS NOT SUITABLE FOR ALL INVESTORS. THE RISK OF LOSS IS SUBSTANTIAL. AN INVESTOR COULD LOSE MORE THAN THE INITIAL INVESTMENT. PAST PERFORMANCE IS NOT NECESSARILY INDICATIVE OF FUTURE RESULTS.

COFFEE

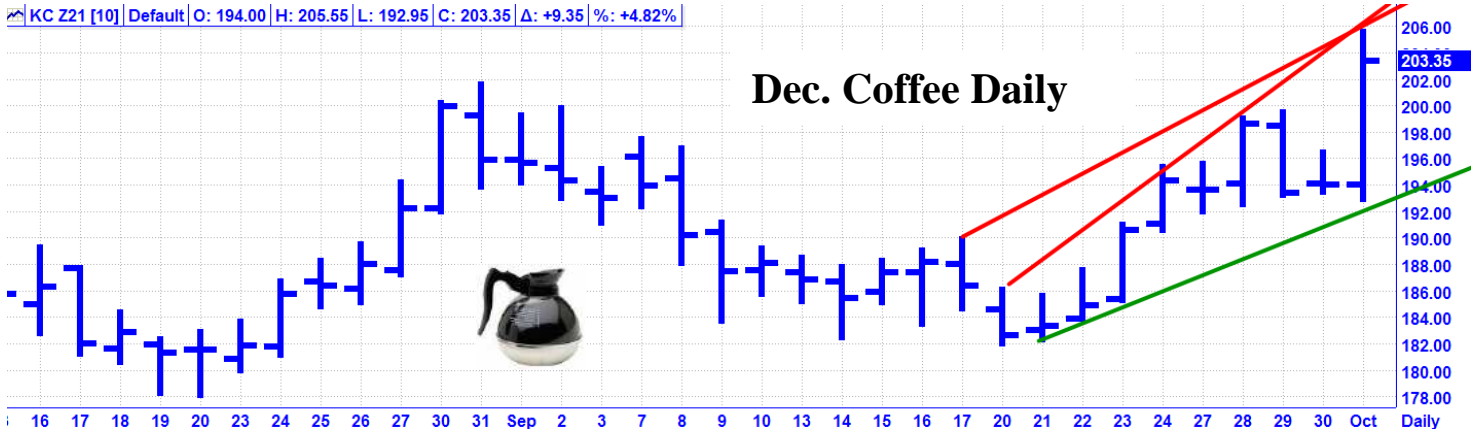
08/27 KC Z21 CL 192.20

10/01 KC Z21 CL 203.35

October New Only - Coffee is in a multi month strong up trend. Following a pullback into 9/20, it had a strong rally into the end of the month and is now at multi year highs. There are two major Astro events in October. 10/5 AC – Pluto in Capricorn turns Direct and 10/10 – Saturn turns direct. Capricorn is the ruling sign and Saturn is the ruling planet for Coffee.

Key Dates – 10/6, 10/11

KC Z21 [10] Default O: 194.00 H: 205.55 L: 192.95 C: 203.35 Δ: +9.35 %: +4.82%



CATTLE

08/27 LE Z21 CL 135.200

10/01 LE Z21 CL 125.225

September Review – “There are two top Astro events of interest for Cattle this months. 8/27 AC – Venus 0 South Latitude and 10/01 AC – Venus Aphelion. Venus is the ruling planet for Taurus the Bull.

Key Dates – 8/30, 9/7, 9/13, 9/16, 10/1 AC”

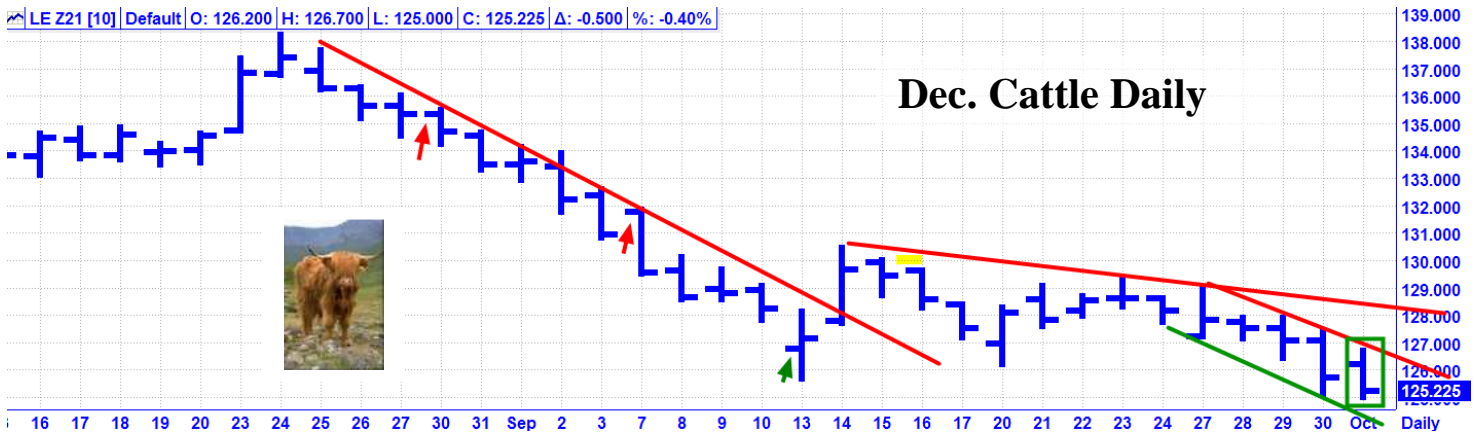
Results – 8/30 and 9/7 were not effective. 9/13 was a good short term low. 9/16 was a pass.

Score – 1 out of 3 good dates = 33.34%

October Update – During the past month, Cattle was in a strong down trend. The latter part of the month, the downside momentum slowed somewhat. The two top Astro events for Cattle this month are: 10/1 AC – Venus Aphelion and 10/29 AC – Venus Greatest Elongation East. Venus is the ruling planet for Cattle. There is a good chance for a low on Monday, October 4th with Venus at Aphelion.

Key Dates – 10/4, 10/14, 10/18, 10/29 AC

LE Z21 [10] Default O: 126.200 H: 126.700 L: 125.000 C: 125.225 Δ: -0.500 %: -0.40%



FUTURES AND OPTIONS TRADING IS NOT SUITABLE FOR ALL INVESTORS. THE RISK OF LOSS IS SUBSTANTIAL. AN INVESTOR COULD LOSE MORE THAN THE INITIAL INVESTMENT. PAST PERFORMANCE IS NOT NECESSARILY INDICATIVE OF FUTURE RESULTS.

COTTON

08/27 CT Z21 CL 94.84

10/01 CT Z21 CL 104.53

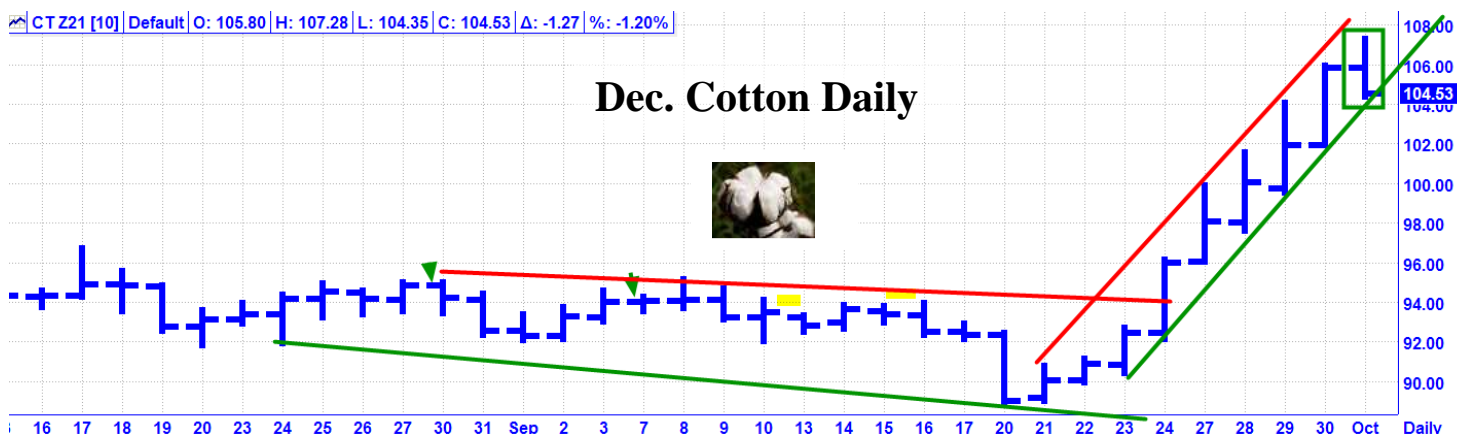
September Update – “Cotton had a good uptrend for most of August. There are two top Astro events of interest for Cotton this months. 8/27 AC – Venus 0 South Latitude and 10/01 AC – Venus Aphelion. Venus is the ruling planet for Cotton. Key Dates – 8/30, 9/7, 9/13, 9/16, 10/1 AC”

Results – 8/30 was VERY close in price and one day past a short term high. 9/7 was close in price and one day ahead of a short term high. 9/13 and 9/16 were passes. Score = 2 out of 2 good dates = 100%.

October Update – Cotton traded slightly lower into 9/20 and then took off like a rocket to the upside. The two top Astro events for Cotton this month are: 10/1 AC – Venus Aphelion and 10/29 AC – Venus Greatest Elongation East. Venus is the ruling planet for Cotton. There is a good chance for a high on Monday, October 4th with Venus at Aphelion.

Key Dates – 10/4, 10/14, 10/18, 10/29 AC

CTZ21 [10] Default | O: 105.80 | H: 107.28 | L: 104.35 | C: 104.53 | Δ: -1.27 | %: -1.20%

GRAINS

The historical short term key to the grains, especially Corn and Soybeans, has been a combination of the lunar cycle and the movements of Mercury. These markets tend to make short term reversals on New Moons and Full Moons. Historically, Full Moons have been lows and New Moons have usually been highs. However, recently this pattern has been inverted. Mercury turns retrograde approximately every 120 days, for a period of about 21 days. Grains tend to make highs at Mercury Retrograde and lows when it turns Direct. Mercury turned Retrograde in Libra, 9/24 AC and will turn Direct 10/18 AM.

An ideal lunar cycle setup is when a market has a sizeable move into a Full Moon or a New Moon. Recently, Grains have been responding to the monthly solar ingress, which is the day the Sun changes signs.

October Key Dates:

10/01AC – Venus Aphelion – Corn, Wheat.

10/05 AC – Jupiter Parallel Latitude Neptune – Oats.

10/05 AC - New Moon in Libra – Corn, Oats, Soybeans, WHEAT.

10/14 AC – Mercury 0 North Latitude - Corn, Oats, Soybeans, Wheat.

10/15 AC – Jupiter Direct – OATS.

10/18 AM – Mercury in Libra turns Direct - Corn, Oats, Soybeans, WHEAT.

10/19 AC – Mercury Perihelion – CORN, Oats, Soybeans, Wheat.

10/20 AM – Full Moon in Aries - Corn, Oats, Soybeans, Wheat.

10/22 AC – Mercury Greatest Elongation West - Corn, Oats, Soybeans, Wheat.

10/29 AC – Venus Greatest Elongation East – WHEAT.

FUTURES AND OPTIONS TRADING IS NOT SUITABLE FOR ALL INVESTORS. THE RISK OF LOSS IS SUBSTANTIAL. AN INVESTOR COULD LOSE MORE THAN THE INITIAL INVESTMENT. PAST PERFORMANCE IS NOT NECESSARILY INDICATIVE OF FUTURE RESULTS.

CORN

08/27 ZC Z21 CL 5534

10/01 ZC Z21 CL 5420

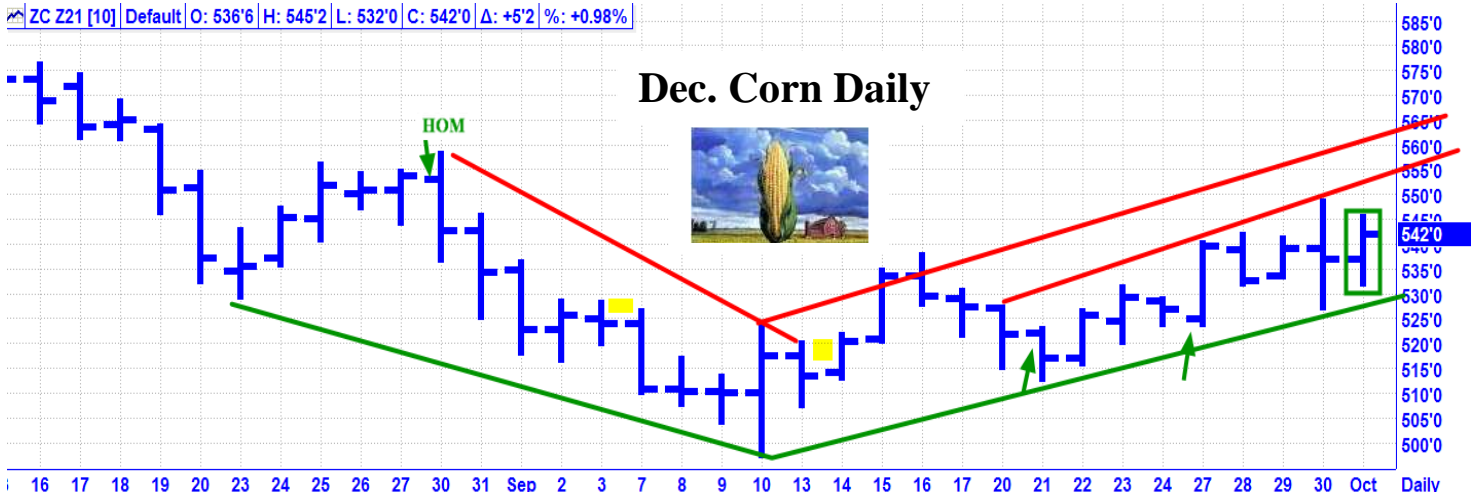
September Review – “During August, Corn traded in a mostly sideways trading range. The top Astro events for Corn in the coming month are: 9/03 AC – Mercury Aphelion and New Moon in Virgo; 9/13 AC – Mercury Greatest Elongation East; 9/20 AC – Full Moon in Pisces; 9/24 AC – Mercury in Libra turns Retrograde, and 10/01 AC – Venus Aphelion. Key Dates – 8/30, 9/7, 9/14, 9/21, 9/27, 10/1 AC”

Results – 8/30 was the exact high of the month. 9/7 and 9/14 were passes. 9/21 was a good low. 9/27 was a good pullback low. Score – 3 out of 3 good dates = 100%.

October Update – Corn had a strong down trend into 9/10 and then a strong up trend into the end of the month. The top Astro events for Corn this month are: 10/01AC – Venus Aphelion; 10/05 AC - New Moon; 10/14 AC – Mercury 0 North Latitude; 10/18 AM – Mercury turns Direct; 10/19 AC – Mercury Perihelion; 10/20 AM – Full Moon; and 10/22 AC – Mercury Greatest Elongation West. The Sun and Mercury are the co-ruling planets for Corn.

Key Dates – 10/4, 10/6, 10/11, 10/14, 10/15, 10/18, 10/20, 10/25

ZC Z21 [10] | Default | O: 536'6 | H: 545'2 | L: 532'0 | C: 542'0 | Δ: +5'2 | %: +0.98%

OATS

08/27 ZO Z21 CL 5220

10/01 ZO Z21 CL 5934

September Review – “From an early August low, Oats had a strong uptrend, finishing on the high of the month into the 8/27 weekend. This is also an all-time high price for Oats. The top Astro events for Oats this month are: 9/03 AC – Mercury Aphelion and New Moon in Virgo; 9/13 AC – Mercury Greatest Elongation East; 9/19 AC – Helio Jupiter enters Pisces; 9/20 AC – Full Moon in Pisces; and 9/24 AC – Mercury in Libra turns Retrograde. Key Dates – 9/3, 9/14, 9/20-21, 9/27”

Results – 9/3 and 9/27 were passes. 9/14 was not effective. 9/20 was a good low. 9/21 was very close in price and one day past the 9/20 low. Score – 2 out of 3 good dates = 66.67%.

October Update – During September, Oats had a small decline into 9/10 and then had a strong rally in the end of the month. The top Astro events for Oats are: 10/05 AC – Jupiter Parallel Latitude Neptune and a New Moon; 10/14 AC – Mercury 0 North Latitude; 10/15 AC – Jupiter Direct; 10/18 AM – Mercury turns Direct; 10/19 AC – Mercury Perihelion; 10/20 AM – Full Moon; and 10/22 AC – Mercury Greatest Elongation West.

Key Dates – 10/6, 10/11, 10/14, 10/18, 10/20

FUTURES AND OPTIONS TRADING IS NOT SUITABLE FOR ALL INVESTORS. THE RISK OF LOSS IS SUBSTANTIAL. AN INVESTOR COULD LOSE MORE THAN THE INITIAL INVESTMENT. PAST PERFORMANCE IS NOT NECESSARILY INDICATIVE OF FUTURE RESULTS.

ZO Z21 [10] Default | O: 580'2 | H: 595'0 | L: 570'2 | C: 593'4 | Δ: +11'2 | %: +1.93%



Dec. Oats Daily

SOYBEANS

08/27 ZS X21 13200

10/01 ZS X21 12476

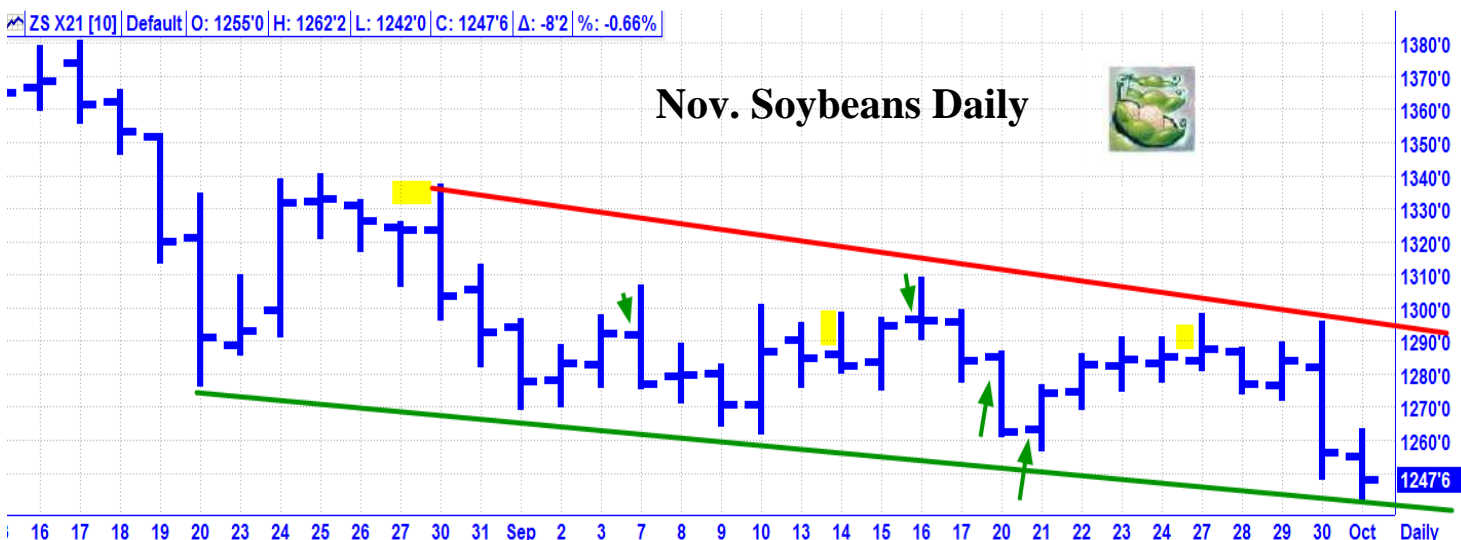
September Review – “Soybeans traded most of August in a trading range, finishing with a downward bias. The top Astro events for Soybeans in the coming month are: 9/3 AC – Mercury Aphelion and New Moon in Virgo; 9/13 AC – Mercury Greatest Elongation East; 9/19 AC – Helio Jupiter enters Pisces; 9/20 AC – Full Moon in Pisces; and 9/24 AC – Mercury in Libra turns Retrograde. Key Dates – 8/30, 9/7, 9/14, 9/16, 9/20-21, 9/27”

Results – 8/30, 9/14, and 9/27 were passes. 9/7 was a short term high. 9/16 was a good short term high. 9/20 was a low. 9/21 was very close in price and one day past the 9/20 low. Score – 4 out of 4 good dates = 100%.

October Update – Soybeans had a gradual and steady down trend for most of September. The top Astro events for Soybeans in October are: 10/05 AC - New Moon; 10/14 AC – Mercury 0 North Latitude; 10/18 AM – Mercury turns Direct; 10/19 AC – Mercury Perihelion; 10/20 AM – Full Moon; and 10/22 AC – Mercury Greatest Elongation West.

Key Dates – 10/6, 10/11, 10/12, 10/14, 10/15, 10/18, 10/20

ZS X21 [10] Default | O: 1255'0 | H: 1262'2 | L: 1242'0 | C: 1247'6 | Δ: -8'2 | %: -0.66%



Nov. Soybeans Daily

Please see Wheat in the Martian Market Review section, later in this letter.

FUTURES AND OPTIONS TRADING IS NOT SUITABLE FOR ALL INVESTORS. THE RISK OF LOSS IS SUBSTANTIAL. AN INVESTOR COULD LOSE MORE THAN THE INITIAL INVESTMENT. PAST PERFORMANCE IS NOT NECESSARILY INDICATIVE OF FUTURE RESULTS.

MARTIAN MARKETS OF THE MONTH REVIEW

9/03 AC – Helio Mars entered Libra. Libra is the ruling sign for Sugar and co-ruler for Wheat. Secondly, Libra is harmonically related to: Capricorn – Coffee; Aquarius – Copper; & Cancer – Silver.

9/14 AC – Geo Mars entered Libra. Libra is the ruling sign for Sugar and co-ruler for Wheat. Secondly, Libra is harmonically related to: Capricorn – Coffee; Aquarius – Copper; & Cancer – Silver.

WHEAT

08/27 ZW Z21 CL 7316

10/01 ZW Z21 CL 7576

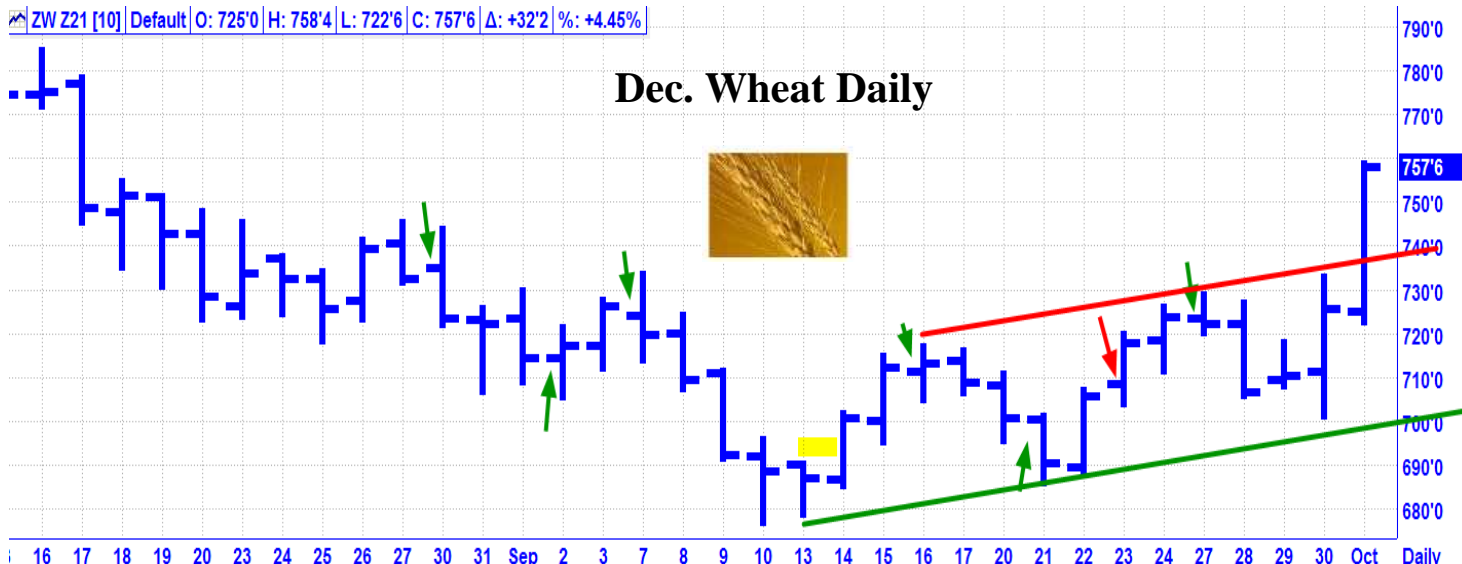
September Review – “Wheat had a strong rally into mid month and then gave back about half of the rally from the late July low. Looking ahead, the top Astro events for Wheat are: 8/27 AC – Venus 0 South Latitude; 9/03 AC – Mercury Aphelion and New Moon in Virgo; 9/03 AC – Helio Mars enters Libra; 9/13 AC – Mercury Greatest Elongation East; 9/14 AC – Helio Mars enters Libra; 9/20 AC – Full Moon in Pisces; 9/24 AC – Mercury in Libra turns Retrograde; and 10/01 AC – Venus Aphelion.
Key Dates – 8/30, 9/2, *9/7*, 9/14, 9/16, 9/21, 9/23, 9/27, 10/1 AC”

Results – 8/30 was very close in price and one day past a good high. 9/2 was a short term low. 9/7 was a very good high. 9/14 was a pass. 9/16 was a good high. 9/21 was a good low. 9/23 was not effective. 9/27 was a good high.
Score – 6 out of 7 good dates = 85.71%

October Update – During September, Wheat declined into mid-month and then had a good up trend into the end of the month. 10/1 Wheat broke out to the upside of its trading channel. However, with the Venus Aphelion change in trend over the 10/1 weekend, that may be a fake out break out. The top Astro events for Wheat in October are: 10/01AC – Venus Aphelion; 10/05 AC - New Moon in Libra; 10/14 AC – Mercury 0 North Latitude; 10/18 AM – Mercury in Libra turns Direct; 10/19 AC – Mercury Perihelion; 10/20 AM – Full Moon in Aries; 10/22 AC – Mercury Greatest Elongation West; and 10/29 AC – Venus Greatest Elongation East.

Key Dates – 10/4, 10/6, 10/11, 10/13, 10/14, 10/15, *10/18*, 10/20, 10/25, 10/29 AC

[ZW Z21 \[10\]](#) | [Default](#) | [O: 725'0](#) | [H: 758'4](#) | [L: 722'6](#) | [C: 757'6](#) | [Δ: +32'2](#) | [%: +4.45%](#)



FUTURES AND OPTIONS TRADING IS NOT SUITABLE FOR ALL INVESTORS. THE RISK OF LOSS IS SUBSTANTIAL. AN INVESTOR COULD LOSE MORE THAN THE INITIAL INVESTMENT. PAST PERFORMANCE IS NOT NECESSARILY INDICATIVE OF FUTURE RESULTS.

SUGAR

08/27 SB HV22 CL 20.68

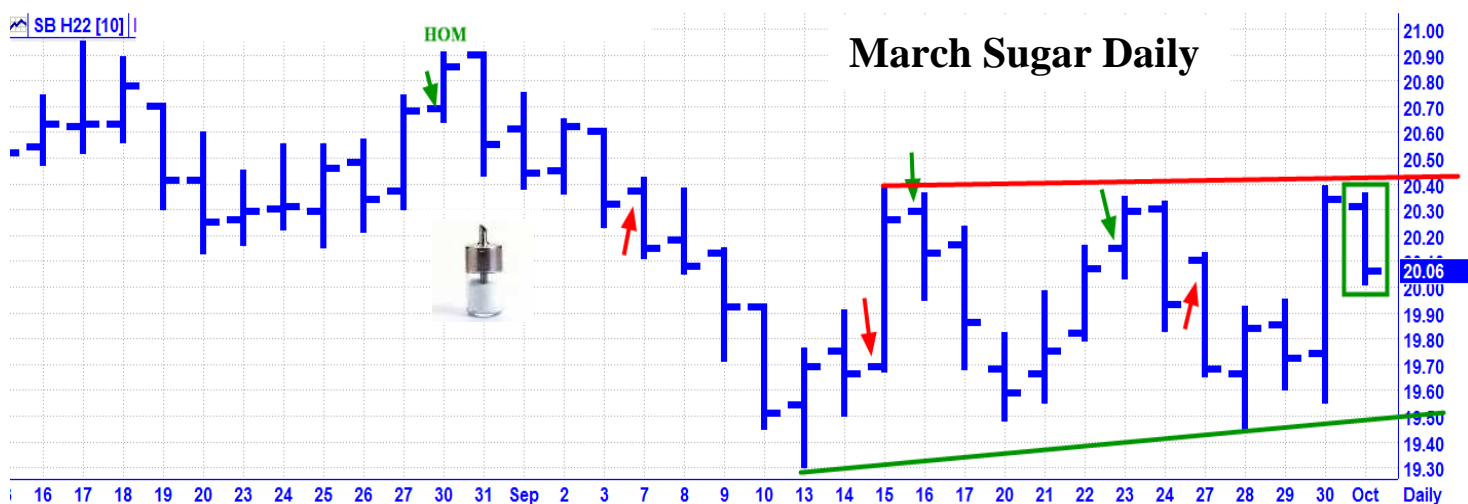
10/01 SB HV22 CL 20.06

September Review – “Sugar had a strong rally for most of August, reaching multi-month highs. Looking head, we have some potential fireworks for Sugar this month, with both Helio and Geo Mars entering Libra, Mercury turning Retrograde in Libra, and Libra is the ruling sign for Sugar. The top Astro events this month for Sugar are: 8/30 – Venus 0 South Latitude; 9/3 AC – Helio Mars enters Libra; 9/14 AC – Geo Mars enters Libra; 9/24 AC – Mercury in Libra turns Retrograde.; and 10/1 AC – Venus Aphelion. Key Dates – 8/30, 9/7, 9/15-16, 9/23, 9/27, 10/1 AC”

Results – 8/30 was the exact high of the month. 9/7, 9/15, and 9/27 were not effective. 9/16 was a good high. 9/23 was a good high. Score – 3 out of 6 good dates = 50%.

October Update – Following a decline into mid September, Sugar traded in a sideways trading range. The top Astro events for Sugar in October are: 10/01AC – Venus Aphelion; 10/05 AC - New Moon in Libra; 10/18 AM – Mercury in Libra turns Direct; 10/20 AM – Full Moon in Aries; and 10/29 AC – Venus Greatest Elongation East. Venus is the ruling planet and Libra is the ruling sign for Sugar.

Key Dates – 10/4, 10/6, 10/11, 10/13, 10/18, 10/20, 10/29 AC



MARTIAN MARKETS OF THE MONTH NEW

10/29 AC – Geo Mars enters Scorpio. Scorpio is the ruling sign for Cocoa, Hogs, and T-Bonds. Secondly, Scorpio is harmonically related to: Aquarius – Copper; Pisces – Commodity Index & Oil; Taurus – Cattle & Cotton; Cancer – Silver; and Leo – Corn, Gold, & OJ.

Please see T-Bonds toward the front of the letter in the financial section.

FUTURES AND OPTIONS TRADING IS NOT SUITABLE FOR ALL INVESTORS. THE RISK OF LOSS IS SUBSTANTIAL. AN INVESTOR COULD LOSE MORE THAN THE INITIAL INVESTMENT. PAST PERFORMANCE IS NOT NECESSARILY INDICATIVE OF FUTURE RESULTS.

COCOA

08/27 CC Z21 CL 2572

10/01 CC Z21 CL 2710

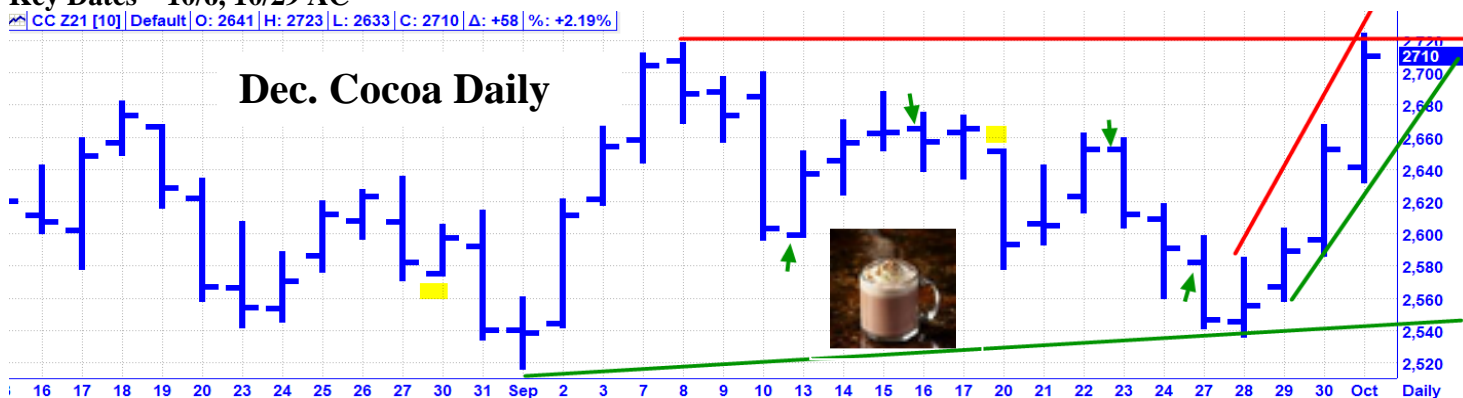
September Review – “Cocoa had a good uptrend for most of August. Looking ahead, this is a low energy month for Cocoa. Key Dates – 830, 9/13, 9/16, 9/20, 9/23, 9/27”

Results – 8/30 and 9/20 were passes. 9/13 was very close in price and one day past a good low. 9/16 was very close in price and one day past a good high. 9/23 was very close in price and a good high. 9/27 was close in price and a very good low. Score – 4 out of 4 good dates = 100%.

October Update – Following a decline into the last week of September, Cocoa mounted a very strong rally to finish near the high of the month. Key resistance is at the 2800 area. The top Astro events for October are: 10/5 AC – Pluto turns Direct and 10/29 AC – Geo Mars enters Scorpio. Pluto is the ruling planet and Scorpio is the ruling sign for Cocoa.

Key Dates – 10/6, 10/29 AC

[CC Z21 \[10\]](#) | Default | O: 2641 | H: 2723 | L: 2633 | C: 2710 | Δ: +58 | %: +2.19%



HOGS

08/27 HE Z21 CL 83.200

10/01 HE Z21 CL 85.300

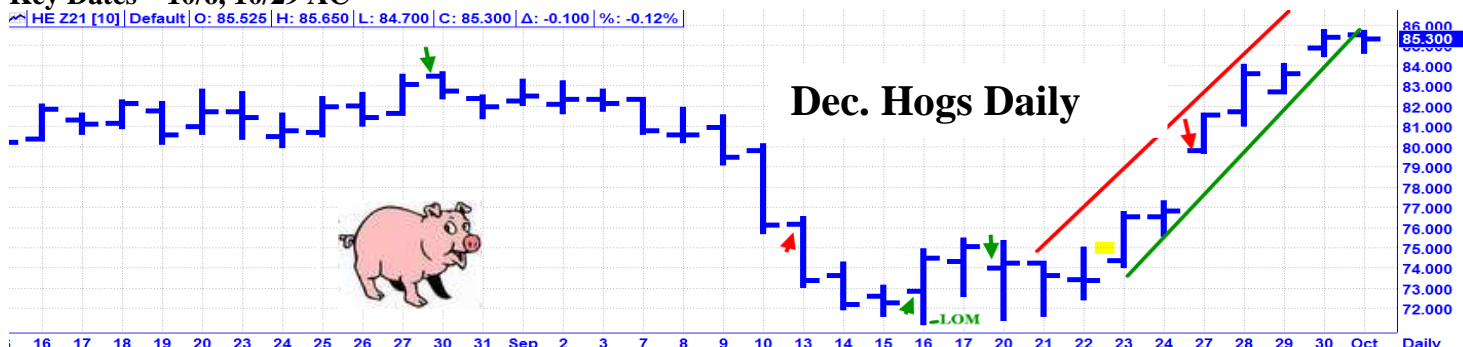
September Review – “Hogs had a sharp down move into an 8/10 trough and then recovered about 50% into the 8/27 weekend. This is a low energy month for Hogs. Key Dates – 830, 9/13, 9/16, 9/20, 9/23, 9/27”

Results – 8/30 was a very good high. 9/13 was not effective. 9/16 was the exact low of the month. 9/20 was close in price and one day past a short term high. 9/23 was a pass. 9/27 was not effective. Score – 3 out of 5 good dates = 60%.

October Update – Hogs had a sharp decline into mid-month and then reversed for a big rally for new highs into the end of the month. However, the market seemed to lose some upside momentum during the last two days of the month. The top Astro events for October are: 10/5 AC – Pluto turns Direct and 10/29 AC – Geo Mars enters Scorpio. Pluto is the ruling planet and Scorpio is the ruling sign for Hogs.

Key Dates – 10/6, 10/29 AC

[HE Z21 \[10\]](#) | Default | O: 85.525 | H: 85.650 | L: 84.700 | C: 85.300 | Δ: -0.100 | %: -0.12%



FUTURES AND OPTIONS TRADING IS NOT SUITABLE FOR ALL INVESTORS. THE RISK OF LOSS IS SUBSTANTIAL. AN INVESTOR COULD LOSE MORE THAN THE INITIAL INVESTMENT. PAST PERFORMANCE IS NOT NECESSARILY INDICATIVE OF FUTURE RESULTS.

SPECIAL ANNOUNCEMENTS

October 31, 2021 will be the 43rd Anniversary for Astro-Trend and related publications.

GET THE FRACTAL FUTURES FORECAST NOW!

FREE! - The 2020 Fractal Futures Forecasts Results is available now FREE, just for asking! This covers approximately 27 major futures markets. You can also get a free 10 minute class to explain how you can use these charts. Many of these charts are amazingly accurate. It's educational! It's simple! It's free! It comes with a money back guarantee. Call Today!

The 2021 Fractal Forecast is available now! Subscribers can get this for 75% off = \$ 30 for 27 markets for the rest of 2021. You can get a free 10 minute class on how to use this. Contact me today!

Time Zone – As of March 14, 2021, 2:00 AM, we are observing Eastern Daylight Time (GMT -4)

Holiday Schedule – There are no market holidays this month.

Publishing Schedule – The November letters will be published the late night of October 31, 2021.

Contact - Please note that our direct telephone number is 239-594-3939. International clients can call me for free on Skype at nwinski_1 . You can reach me during market hours, or leave a message any time and I will call you back as soon as possible. I look forward to helping you.



Thank You!

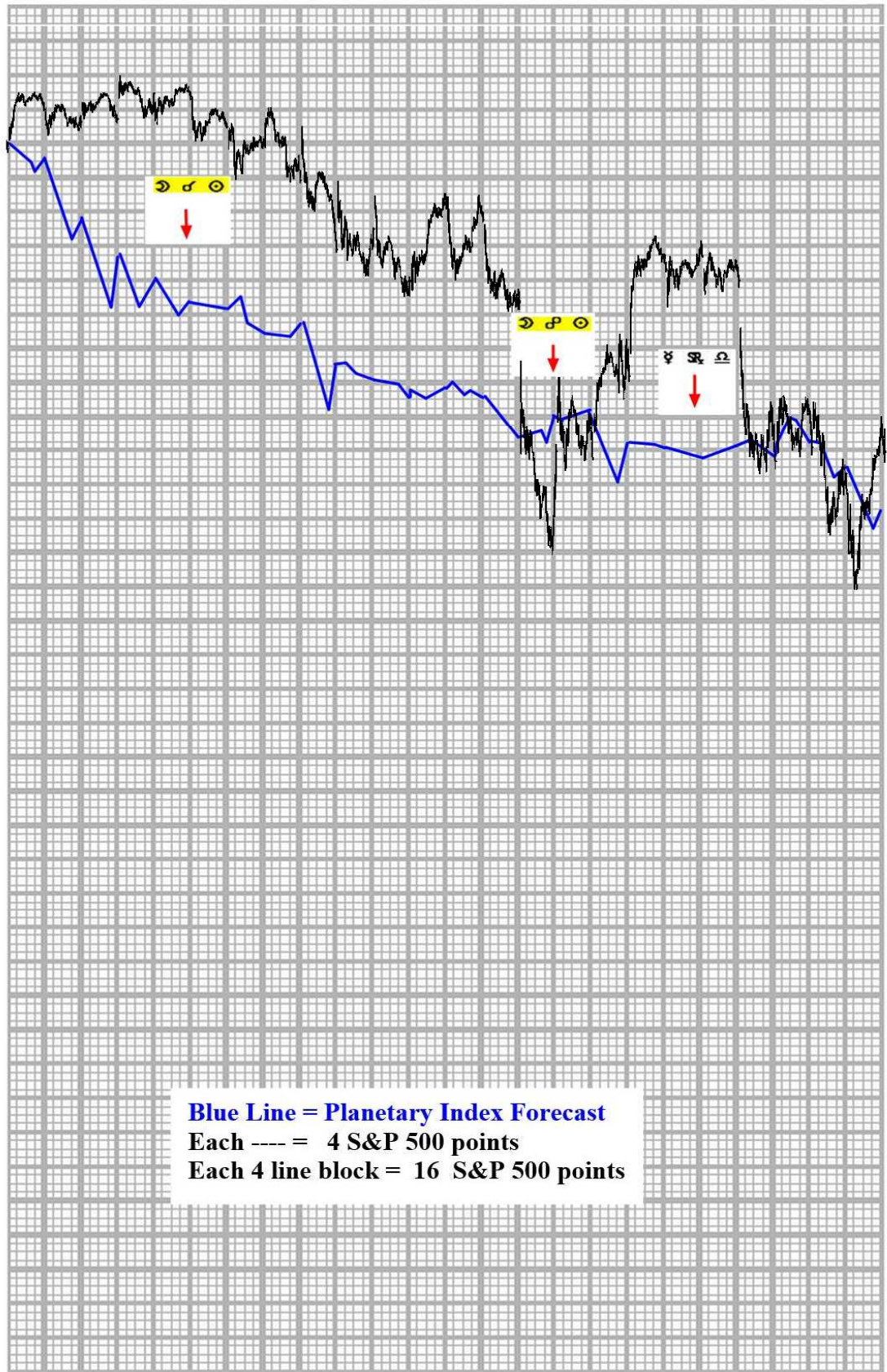
GOOD TRADING!

All of the material contained herein is the sole opinion of Norm Winski, the publisher of Astro-Trend Publication. Norm Winski will not be held responsible for accidental oversights, typos, or incorrect information from any sources that generate any of the opinions and comments found in this publication. Futures, Options on futures, and Forex trading carry significant risk, and is not for every investor. Only risk capital should be used. Past performance is not necessarily indicative of future results. Any person who chooses to use this information as a basis for any of their trading assumes all the liability and risk for themselves and hereby and absolutely agrees to indemnify and hold harmless Norm Winski. Risk may be more than the funds deposited in a trading account.

FUTURES AND OPTIONS TRADING IS NOT SUITABLE FOR ALL INVESTORS. THE RISK OF LOSS IS SUBSTANTIAL. AN INVESTOR COULD LOSE MORE THAN THE INITIAL INVESTMENT. PAST PERFORMANCE IS NOT NECESSARILY INDICATIVE OF FUTURE RESULTS.

30 31 1 2 3 7 8 9 10 13 14 15 16 17 20 21 22 23 24 27 28 29 30 1

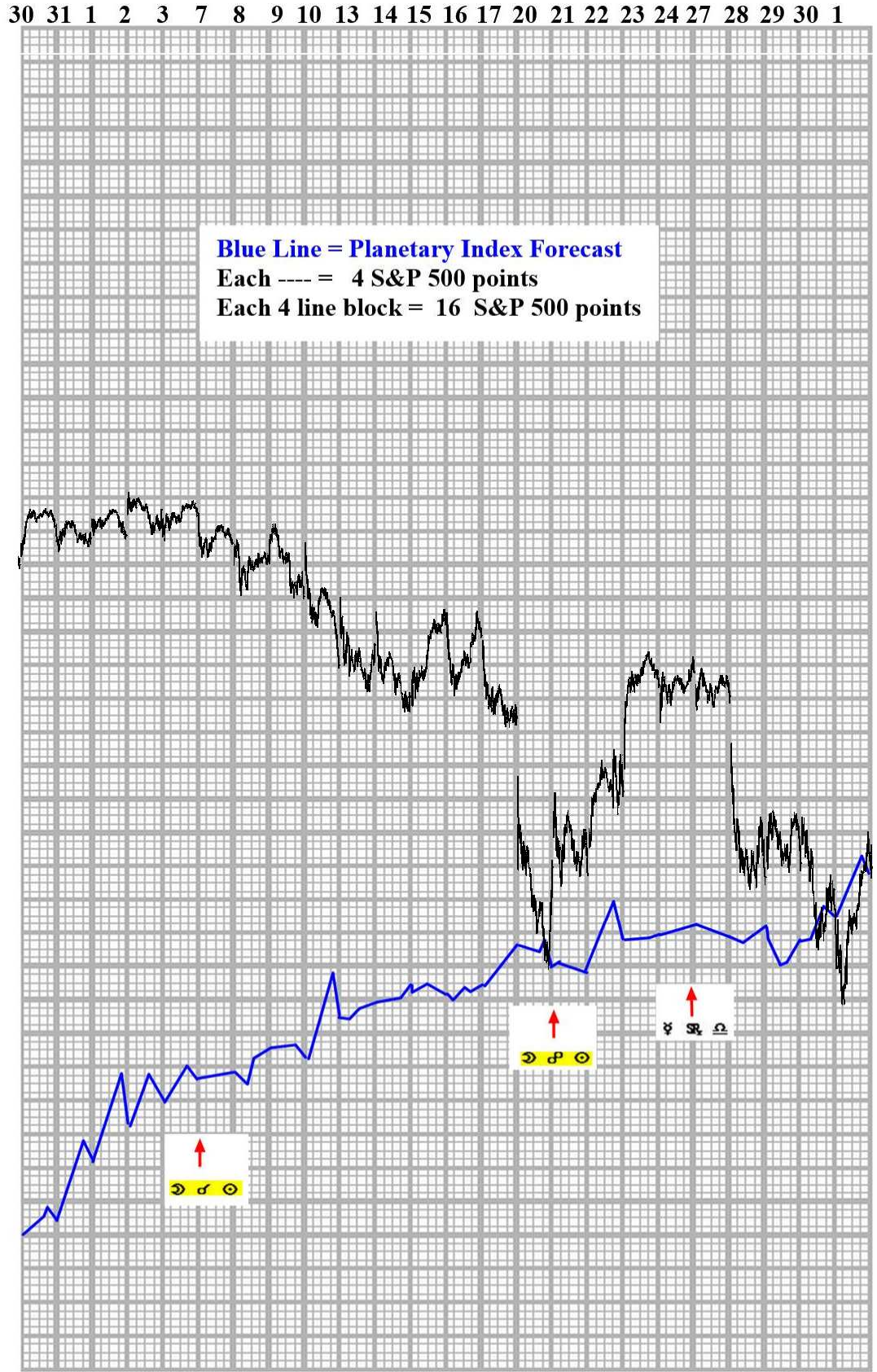
**ASTRO-TREND
SEPTEMBER 2021 STOCK MARKET FORECAST
PLANETARY INDEX**



Blue Line = Planetary Index Forecast
 Each --- = 4 S&P 500 points
 Each 4 line block = 16 S&P 500 points

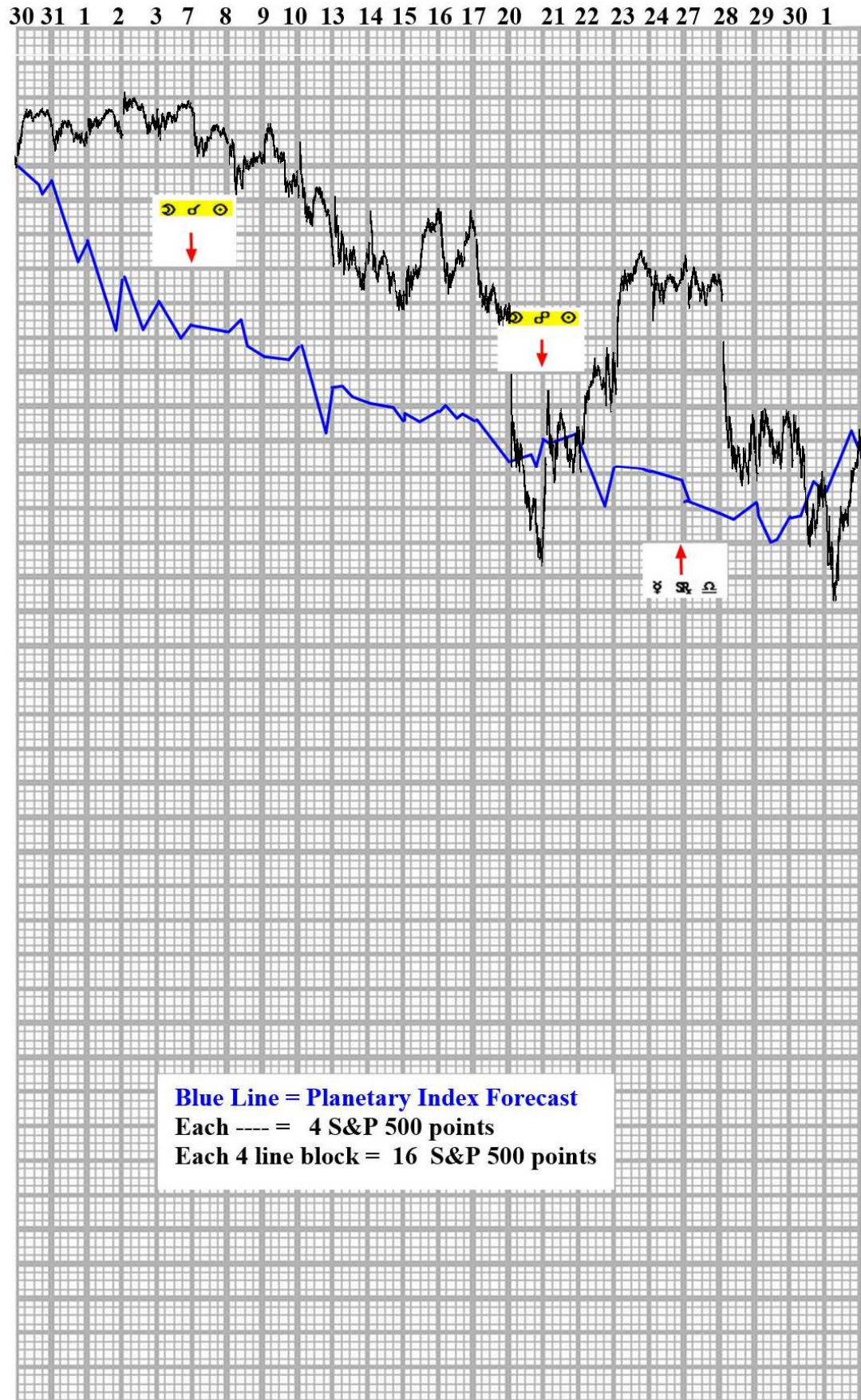
FUTURES AND OPTIONS TRADING IS NOT SUITABLE FOR ALL INVESTORS. THE RISK OF LOSS IS SUBSTANTIAL. AN INVESTOR COULD LOSE MORE THAN THE INITIAL INVESTMENT. PAST PERFORMANCE IS NOT NECESSARILY INDICATIVE OF FUTURE RESULTS.

**ASTRO-TREND
SEPTEMBER 2021 STOCK MARKET FORECAST
PLANETARY INDEX INVERTED**



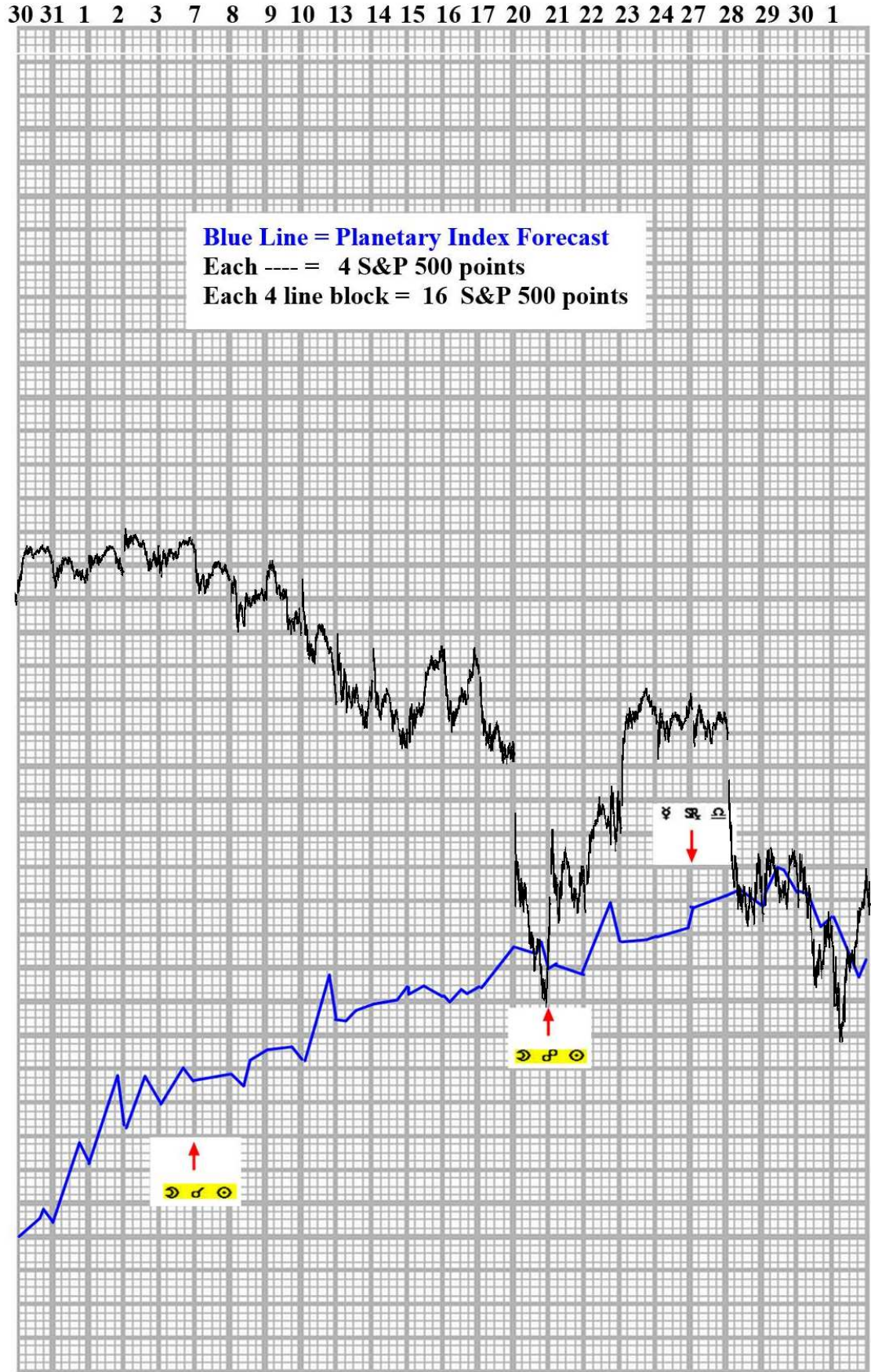
FUTURES AND OPTIONS TRADING IS NOT SUITABLE FOR ALL INVESTORS. THE RISK OF LOSS IS SUBSTANTIAL. AN INVESTOR COULD LOSE MORE THAN THE INITIAL INVESTMENT. PAST PERFORMANCE IS NOT NECESSARILY INDICATIVE OF FUTURE RESULTS.

**ASTRO-TREND
SEPTEMBER 2021 STOCK MARKET FORECAST
POLARITY ADJUSTED PLANETARY INDEX I**



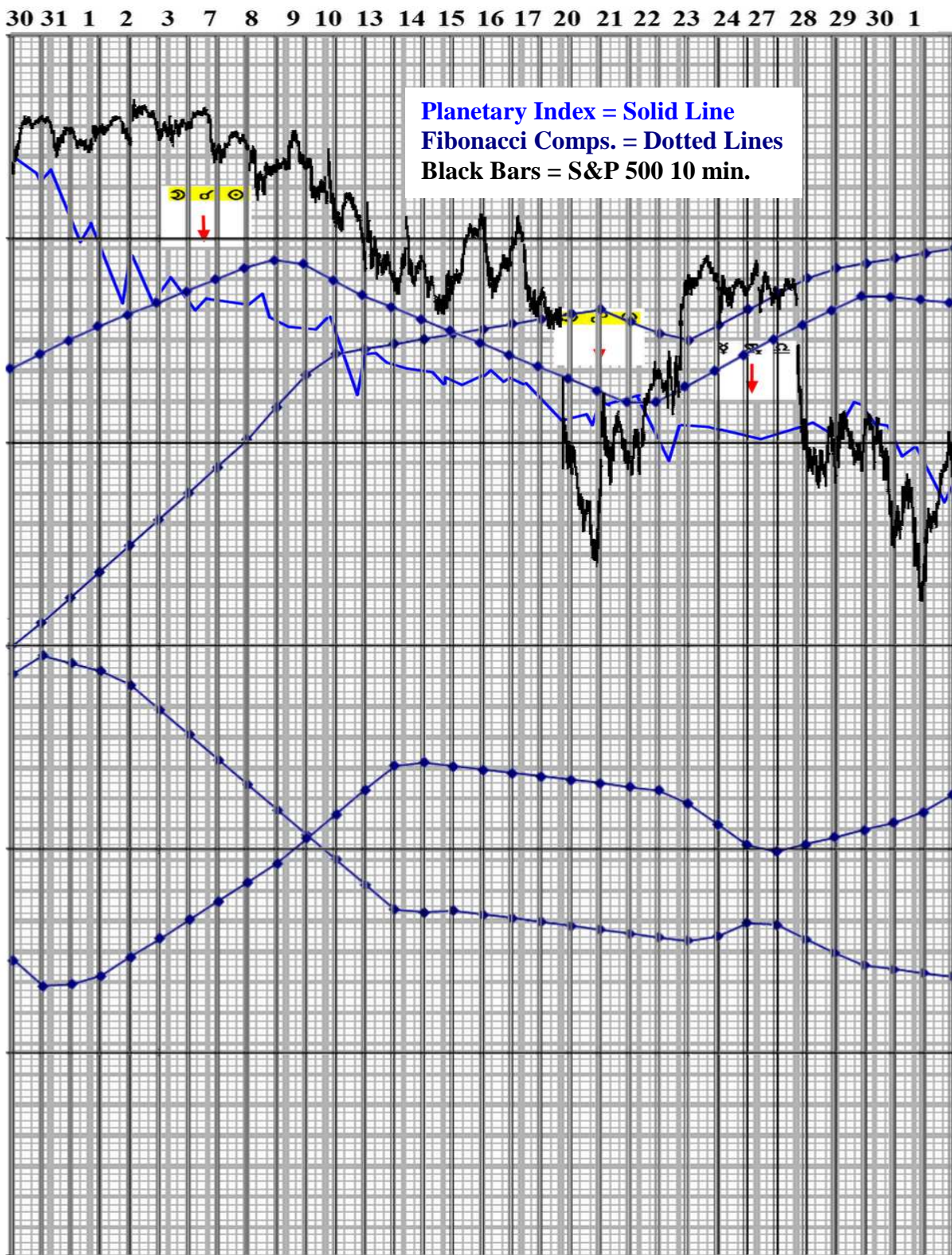
FUTURES AND OPTIONS TRADING IS NOT SUITABLE FOR ALL INVESTORS. THE RISK OF LOSS IS SUBSTANTIAL. AN INVESTOR COULD LOSE MORE THAN THE INITIAL INVESTMENT. PAST PERFORMANCE IS NOT NECESSARILY INDICATIVE OF FUTURE RESULTS.

**ASTRO-TREND
SEPTEMBER 2021 STOCK MARKET FORECAST
POLARITY ADJUSTED PLANETARY INDEX II**



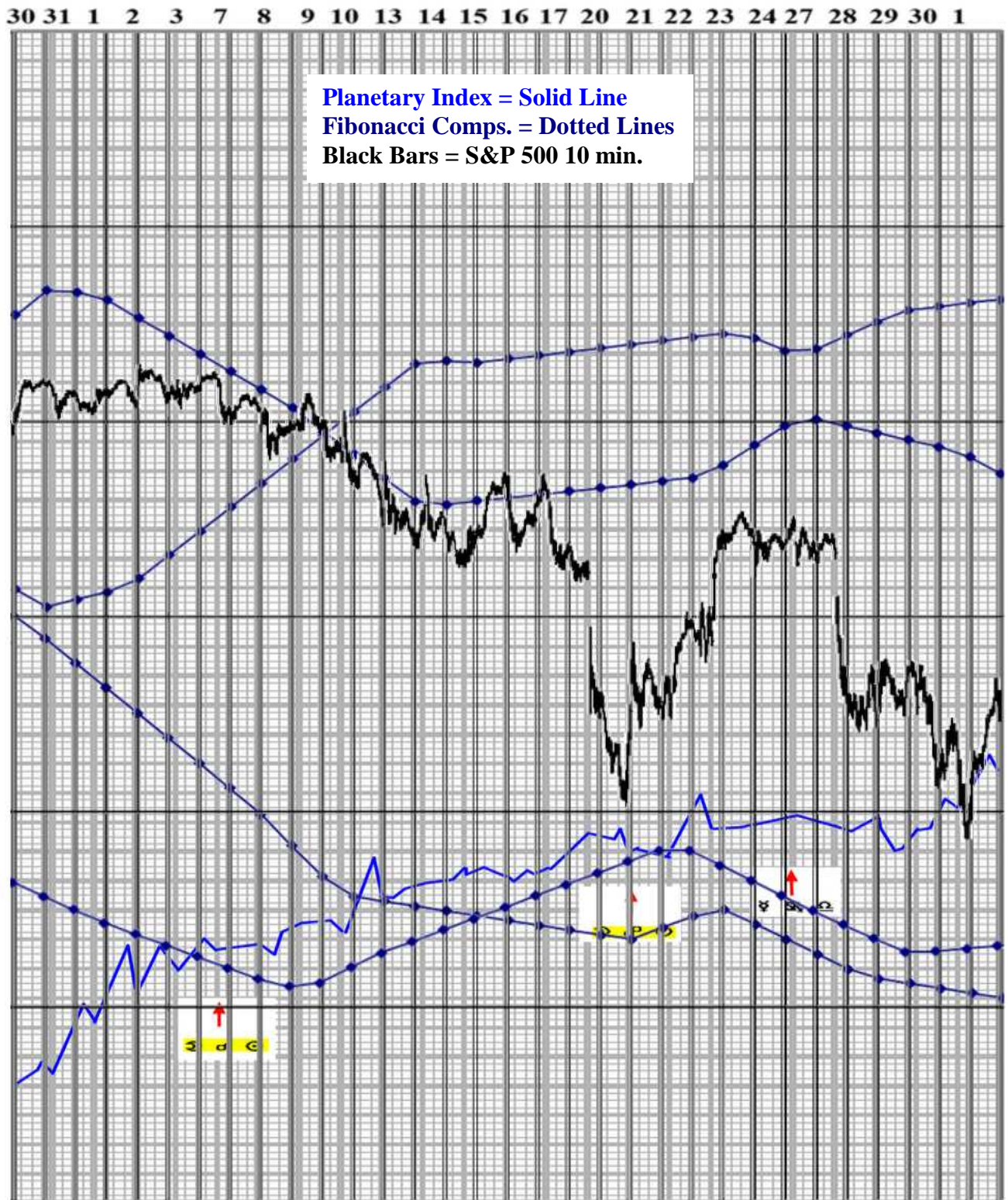
FUTURES AND OPTIONS TRADING IS NOT SUITABLE FOR ALL INVESTORS. THE RISK OF LOSS IS SUBSTANTIAL. AN INVESTOR COULD LOSE MORE THAN THE INITIAL INVESTMENT. PAST PERFORMANCE IS NOT NECESSARILY INDICATIVE OF FUTURE RESULTS.

September 2021 Planetary Index & September 2021 Fibonacci Composite Averages



FUTURES AND OPTIONS TRADING IS NOT SUITABLE FOR ALL INVESTORS. THE RISK OF LOSS IS SUBSTANTIAL. AN INVESTOR COULD LOSE MORE THAN THE INITIAL INVESTMENT. PAST PERFORMANCE IS NOT NECESSARILY INDICATIVE OF FUTURE RESULTS.

Inverted September 2021 Planetary Index & September 2021 Fibonacci Composite Averages



FUTURES AND OPTIONS TRADING IS NOT SUITABLE FOR ALL INVESTORS. THE RISK OF LOSS IS SUBSTANTIAL. AN INVESTOR COULD LOSE MORE THAN THE INITIAL INVESTMENT. PAST PERFORMANCE IS NOT NECESSARILY INDICATIVE OF FUTURE RESULTS.

October 2021

ASTRO-TREND KEY DATE ACTIVITY CALENDAR

	4	5	6	7	8	11	12	13	14	15	18	19	20	21	22	25	26	27	28	29
CATTLE	X		x	Xx	X	X		X	Xx	X	X	Xx	X	x	X	X		x	x	X
	26					8		8	30	10	20	12				8				20
COCOA	x		X	x	x			x	x		X	x				X				X
			16																	12
COFFEE	x		X	x	x	X		X	X	x	x	Xx			x	x		x		X
			16			20		8				12								
COPPER	X		X	XX	X	X	x	X	X	X	X	XX	X	x		x		X	x	X
			16	12	8	24		8	18	8	24	12								22
CORN	X		Xx	x	x	X	X	X	Xx	X	XX	xx	XX		x	X				X
	16		22			24	8	12	22	24	40		34			20				10
COTTON	X		x	Xx	X	X		X	Xx	X	X	Xx	X	x		X		x	x	X
	26					8		8	30	10	20	12				8				20
C.I./CRB	x	X	XX	x		x	X		XX		X	x	XX			x		x	X	X
		12	42				8		16		14		26						20	12
GOLD	X		X		x	x				x	x		X		x					X
	16		16										16							
HOGS	x		X	x	x	x		x	x		X	x			X	X				X
			16																	12
JUPITER											x									
LUNAR			x										x							
MARS																				x
MERCURY										x	x		x			x				x
OATS			Xx	X		X	X	X	Xx	x	XX	Xx	XX		x	X		x	x	x
			42	10		20	12	14	28		60	8	34			18				
OIL	x	X	XX	x	X	x	X		XX	x	X	x	XX			x		x	X	X
		12	42			10	8		16		14		26						20	20
OPEC									X							X				X
OJ	X		X		x	x				x			X		x					X
	16		16										16							
PLUTO			x																	
SATURN						x														
SILVER	x		X						x				X		x					
			16										16							
SOYBNS.			Xx	X		X	X	X	Xx	X	X	xx	XX		x	X			x	x
			22			20	8	12	24	24	22		34			18				
STOCKS	Xx	X	xxXx	XXXX	Xx	X	xx	XX	xxxXX	XX	XXxxX	XXxxX	xxX	X	X	x	xxX	X	xxX	xxX
	50	16	60		20	54	12	14	34		40	90	26	38		10	48		12	8
SUGAR	X	X	X	Xx	X	X	X	x	X		XX	xx	XX	x	x			X	x	X
	32		34	8	14	18	8	8	10		30		16							20
SUN																x				
T-BONDS	Xx	X	xx	xxXX	Xx	x	xx	xX	XXxxX	X	xxXx		X	X	x	xxX				X
	28	10	38		16	28			10	18	36		16		8	36				30
VENUS	x			x					x											
WHEAT	X	X	Xx	Xx	X	X	X	x	Xx	X	XX	Xx	XX	x	x	X		X	X	X
	36		42	10	14	34	8	20	32	24	68	8	36		16				8	24
	4	5	6	7	8	11	12	13	14	15	18	19	20	21	22	25	26	27	28	29

LEGEND: x = CIT; x = Important CIT; X = Very Important CIT; X = Major CIT

FUTURES AND OPTIONS TRADING IS NOT SUITABLE FOR ALL INVESTORS. THE RISK OF LOSS IS SUBSTANTIAL. AN INVESTOR COULD LOSE MORE THAN THE INITIAL INVESTMENT. PAST PERFORMANCE IS NOT NECESSARILY INDICATIVE OF FUTURE RESULTS.

October 2021

ASTRO-TREND KEY DATE ACTIVITY CALENDAR

	4	5	6	7	8	11	12	13	14	15	18	19	20	21	22	25	26	27	28	29		
AUSTRAL.	<u>x</u>																				<u>X</u> 10	
AUSSIE \$	X													<u>x</u>		X						
CANADA																					X	<u>X</u> 8
C-BANK																		X				X
GERMANY	x													X								<u>x</u>
EURO		X								<u>x</u>					<u>x</u>	<u>X</u> 8						x
EUROBNK																	<u>X</u> 8					x
JAPAN				X				<u>X</u> 8	<u>X</u> 8					<u>x</u>							<u>Xx</u> 8	
J-BANK	<u>x</u>			x						<u>X</u> 12	x			<u>x</u>								<u>x</u>
JAP.YEN				<u>x</u>												x					<u>x</u>	
TOK.S.E.			<u>x</u>		x	<u>x</u>					x				X	X	<u>x</u>	<u>x</u>				<u>x</u>
SWITZ.						<u>x</u>	<u>x</u>			x	x					<u>xx</u>					X	
SF				<u>X</u> 8							X										X	
UK				x																		X
BNK.ENG.	X			x									<u>x</u>									
BNkEn/Fd			X				<u>X</u> 8	X		<u>X</u> 16						<u>x</u>						X
US						<u>x</u>					X					<u>X</u> 10						X
US FED	X		x						<u>x</u>	x					<u>x</u>	x						X
POWELL	X																					
US \$	<u>Xx</u> 20	<u>X</u> 10	<u>xX</u> 22		<u>xxx</u> 12	<u>Xx</u> 22	<u>x</u>	<u>xx</u>	<u>xx</u>	<u>XXxX</u> 18 30	<u>x</u>		<u>xxXx</u> 16		<u>x</u>	<u>X</u> 36	<u>x</u>	<u>xx</u>			<u>xx</u>	<u>X</u> 12
NYSE	<u>x</u>																<u>X</u> 8					
DJIA	x	x						x	<u>z</u>	<u>x</u>	x										x	<u>X</u> 8
S&P500	<u>X</u> 8	<u>x</u>			x			<u>x</u>		<u>x</u>							x				x	<u>X</u> 8
NASD	<u>X</u> 8					X	<u>X</u> 8	X							<u>X</u> 8						<u>X</u> 8	<u>X</u> 12
STOX	X	x				x	x	x	x		x				x		x				<u>x</u>	<u>x</u>
WRLDBNKS	<u>x</u>			x					x	<u>x</u>			x		x		x	x				<u>x</u>

LEGEND: x = CIT; x = Important CIT; X = Very Important CIT; X = Major CIT

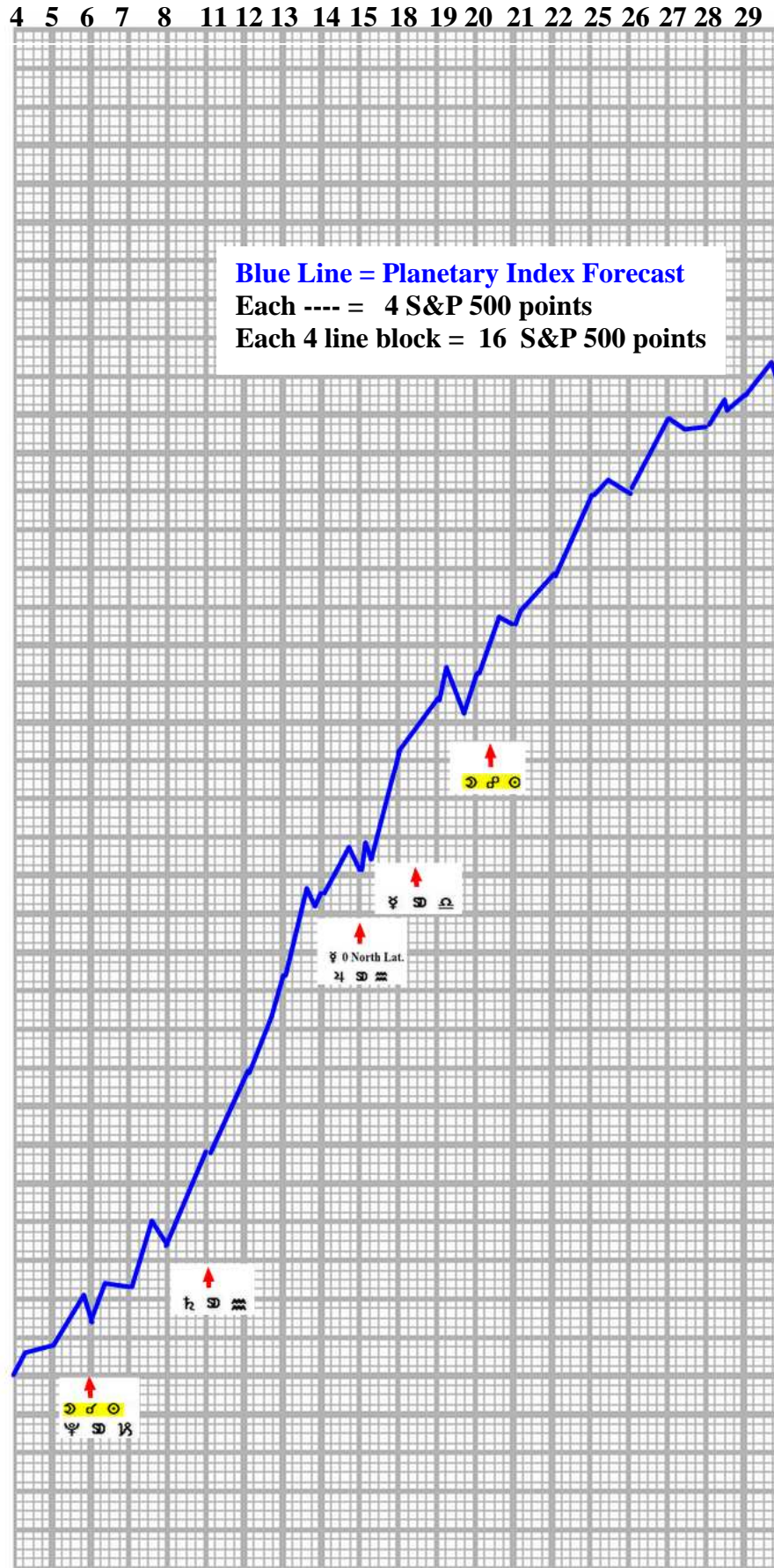
FUTURES AND OPTIONS TRADING IS NOT SUITABLE FOR ALL INVESTORS. THE RISK OF LOSS IS SUBSTANTIAL. AN INVESTOR COULD LOSE MORE THAN THE INITIAL INVESTMENT. PAST PERFORMANCE IS NOT NECESSARILY INDICATIVE OF FUTURE RESULTS.

**ASTRO-TREND
OCTOBER 2021 STOCK MARKET FORECAST
PLANETARY INDEX**



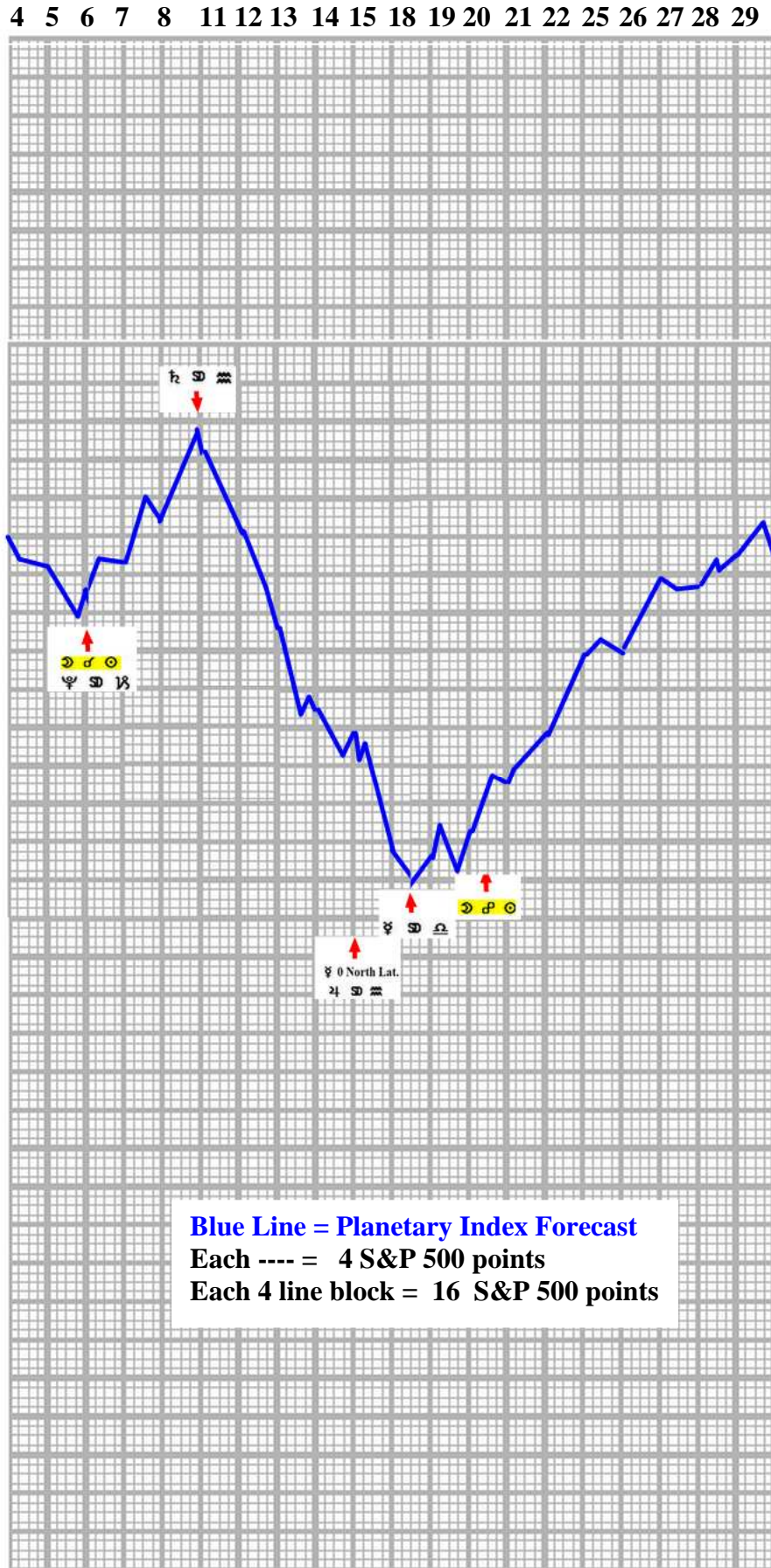
FUTURES AND OPTIONS TRADING IS NOT SUITABLE FOR ALL INVESTORS. THE RISK OF LOSS IS SUBSTANTIAL. AN INVESTOR COULD LOSE MORE THAN THE INITIAL INVESTMENT. PAST PERFORMANCE IS NOT NECESSARILY INDICATIVE OF FUTURE RESULTS.

**ASTRO-TREND
OCTOBER 2021 STOCK MARKET FORECAST
PLANETARY INDEX INVERTED**



FUTURES AND OPTIONS TRADING IS NOT SUITABLE FOR ALL INVESTORS. THE RISK OF LOSS IS SUBSTANTIAL. AN INVESTOR COULD LOSE MORE THAN THE INITIAL INVESTMENT. PAST PERFORMANCE IS NOT NECESSARILY INDICATIVE OF FUTURE RESULTS.

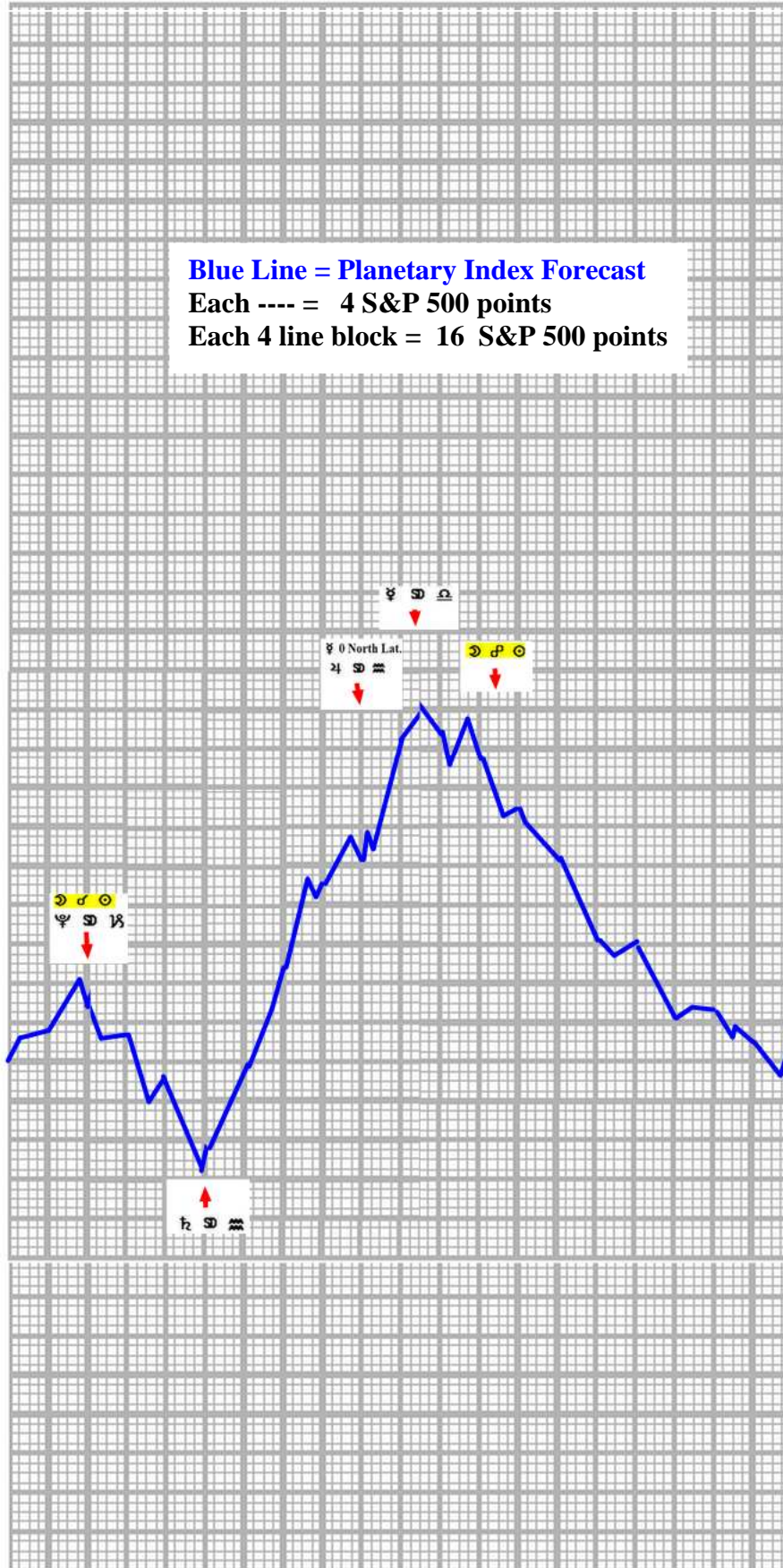
**ASTRO-TREND
OCTOBER 2021 STOCK MARKET FORECAST
POLARITY ADJUSTED PLANETARY INDEX I**



FUTURES AND OPTIONS TRADING IS NOT SUITABLE FOR ALL INVESTORS. THE RISK OF LOSS IS SUBSTANTIAL. AN INVESTOR COULD LOSE MORE THAN THE INITIAL INVESTMENT. PAST PERFORMANCE IS NOT NECESSARILY INDICATIVE OF FUTURE RESULTS.

**ASTRO-TREND
OCTOBER 2021 STOCK MARKET FORECAST
POLARITY ADJUSTED PLANETARY INDEX II**

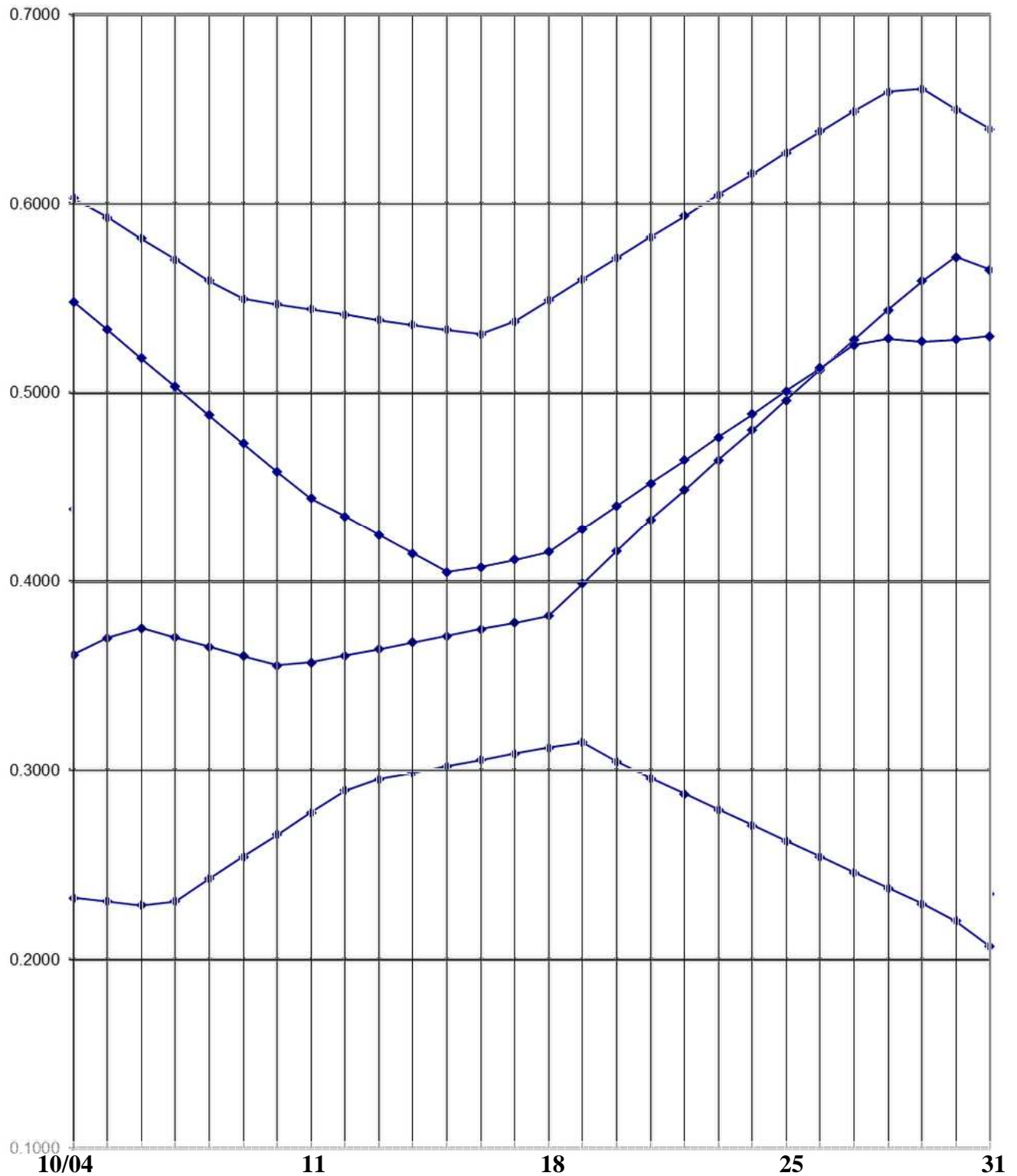
4 5 6 7 8 11 12 13 14 15 18 19 20 21 22 25 26 27 28 29



FUTURES AND OPTIONS TRADING IS NOT SUITABLE FOR ALL INVESTORS. THE RISK OF LOSS IS SUBSTANTIAL. AN INVESTOR COULD LOSE MORE THAN THE INITIAL INVESTMENT. PAST PERFORMANCE IS NOT NECESSARILY INDICATIVE OF FUTURE RESULTS.

FIBONACCI COMPOSITE AVERAGE

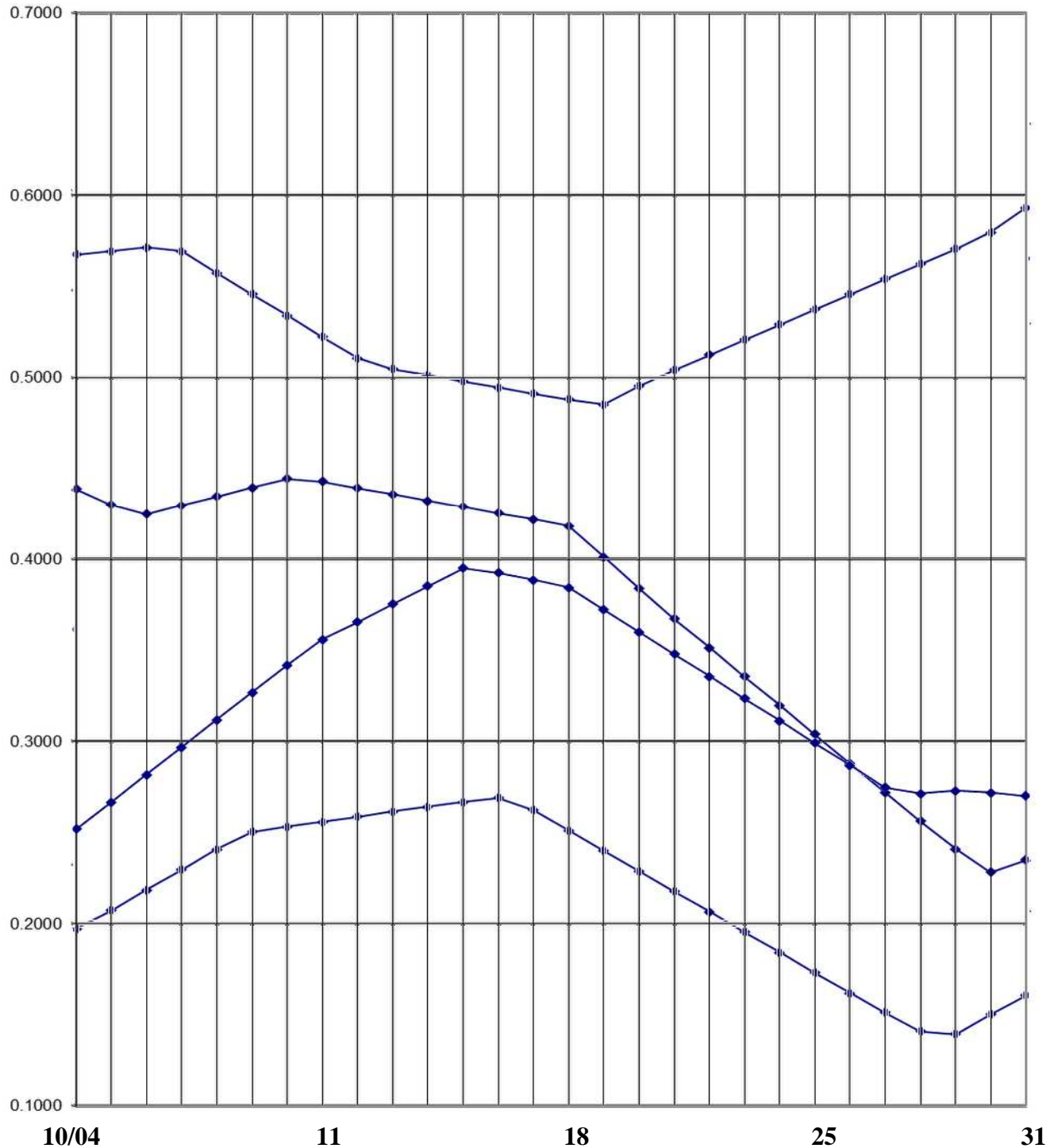
OCTOBER 2021



FUTURES AND OPTIONS TRADING IS NOT SUITABLE FOR ALL INVESTORS. THE RISK OF LOSS IS SUBSTANTIAL. AN INVESTOR COULD LOSE MORE THAN THE INITIAL INVESTMENT. PAST PERFORMANCE IS NOT NECESSARILY INDICATIVE OF FUTURE RESULTS.

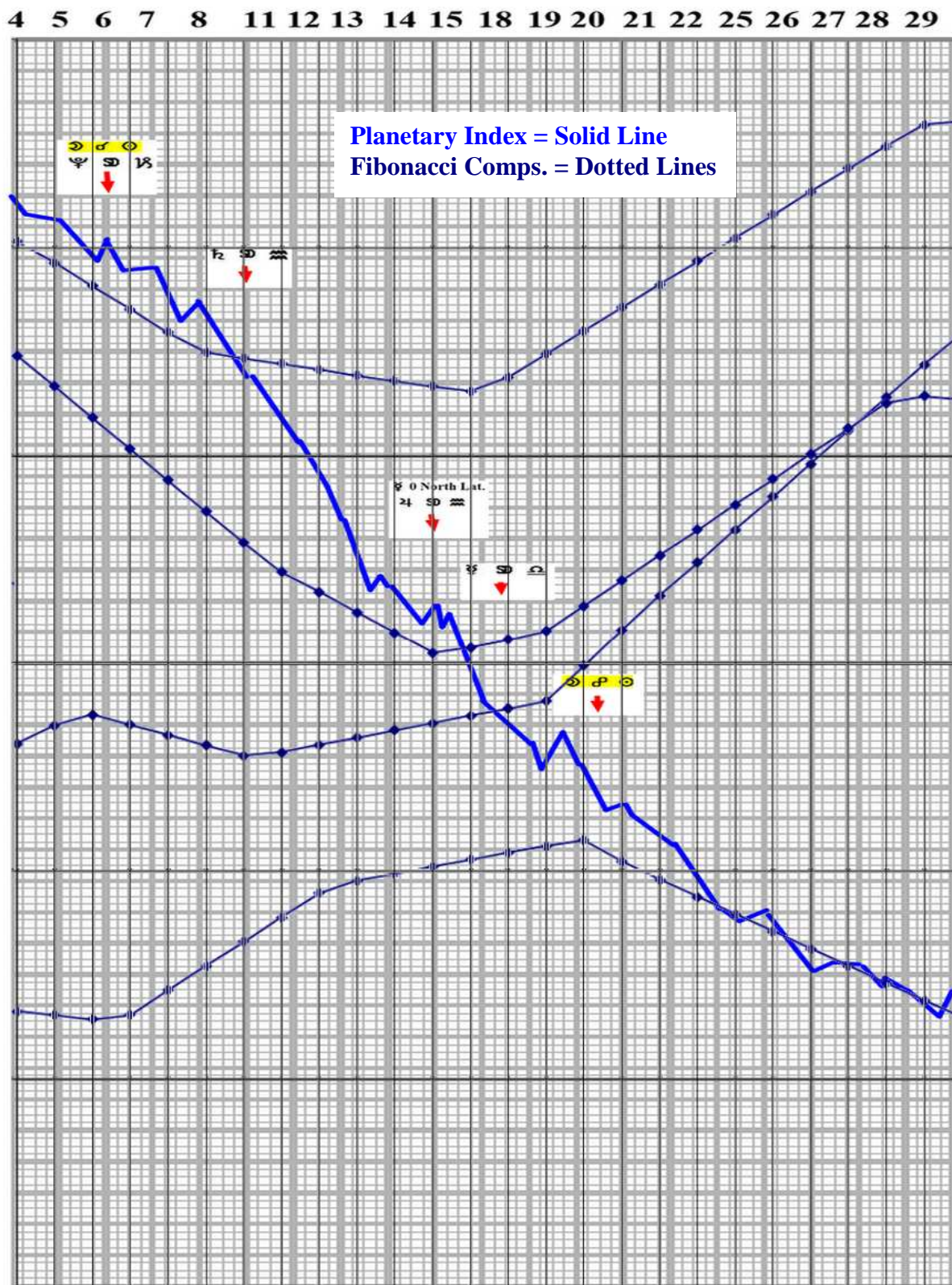
INVERTED FIBONACCI COMPOSITE AVERAGES

OCTOBER 2021



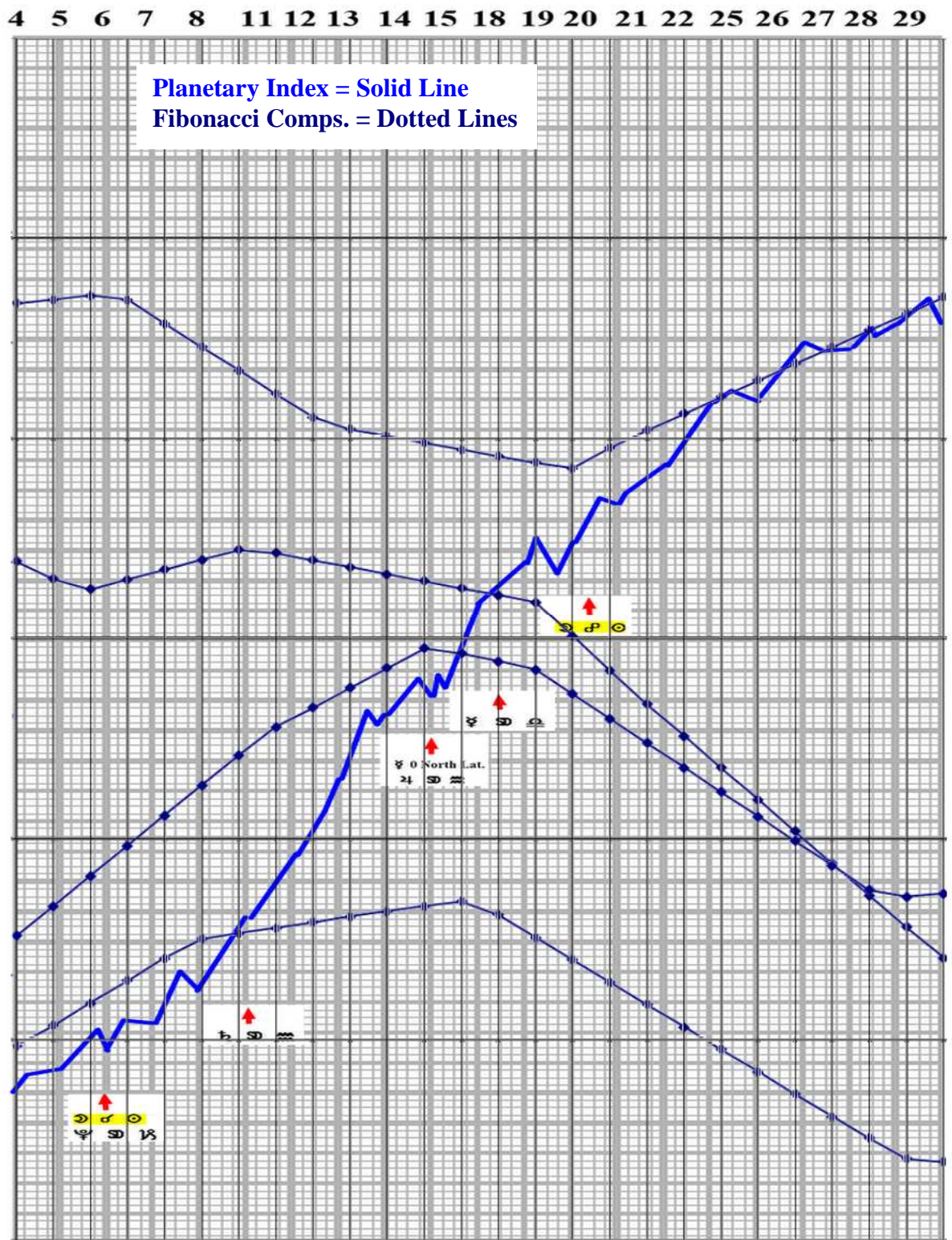
FUTURES AND OPTIONS TRADING IS NOT SUITABLE FOR ALL INVESTORS. THE RISK OF LOSS IS SUBSTANTIAL. AN INVESTOR COULD LOSE MORE THAN THE INITIAL INVESTMENT. PAST PERFORMANCE IS NOT NECESSARILY INDICATIVE OF FUTURE RESULTS.

October 2021 Planetary Index & October 2021 Fibonacci Composite Averages



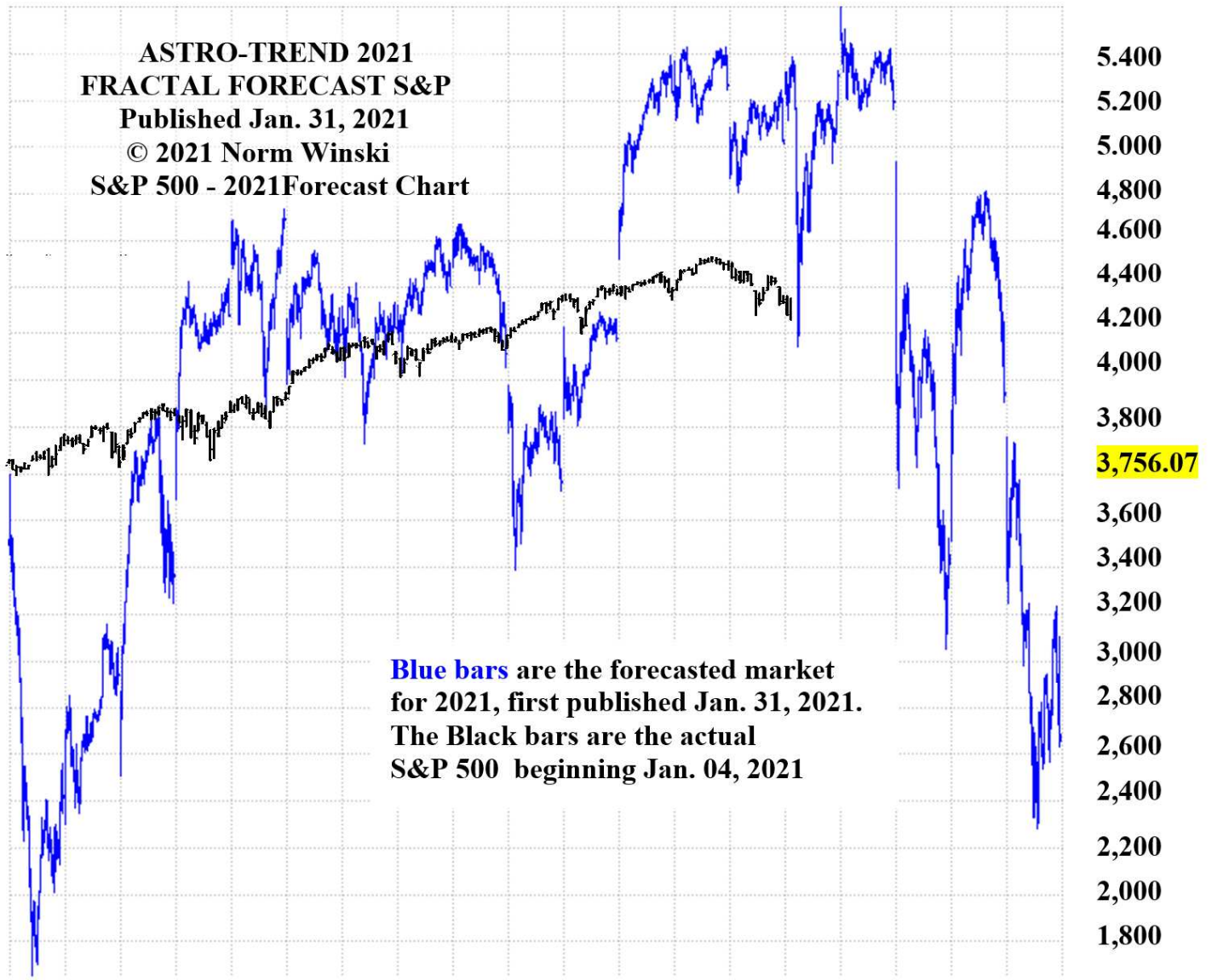
FUTURES AND OPTIONS TRADING IS NOT SUITABLE FOR ALL INVESTORS. THE RISK OF LOSS IS SUBSTANTIAL. AN INVESTOR COULD LOSE MORE THAN THE INITIAL INVESTMENT. PAST PERFORMANCE IS NOT NECESSARILY INDICATIVE OF FUTURE RESULTS.

Inverted October 2021 Planetary Index & October 2021 Fibonacci Composite Averages



FUTURES AND OPTIONS TRADING IS NOT SUITABLE FOR ALL INVESTORS. THE RISK OF LOSS IS SUBSTANTIAL. AN INVESTOR COULD LOSE MORE THAN THE INITIAL INVESTMENT. PAST PERFORMANCE IS NOT NECESSARILY INDICATIVE OF FUTURE RESULTS.

Jan. Feb. Mar. Apr. May Jun Jul Aug Sep Oct Nov Dec Jan
 02 17 31 14 28 14 28 04 18 02 16 30 06 20 04 18 01 15 29 12 26 03 17 31 14 28 12 26 02

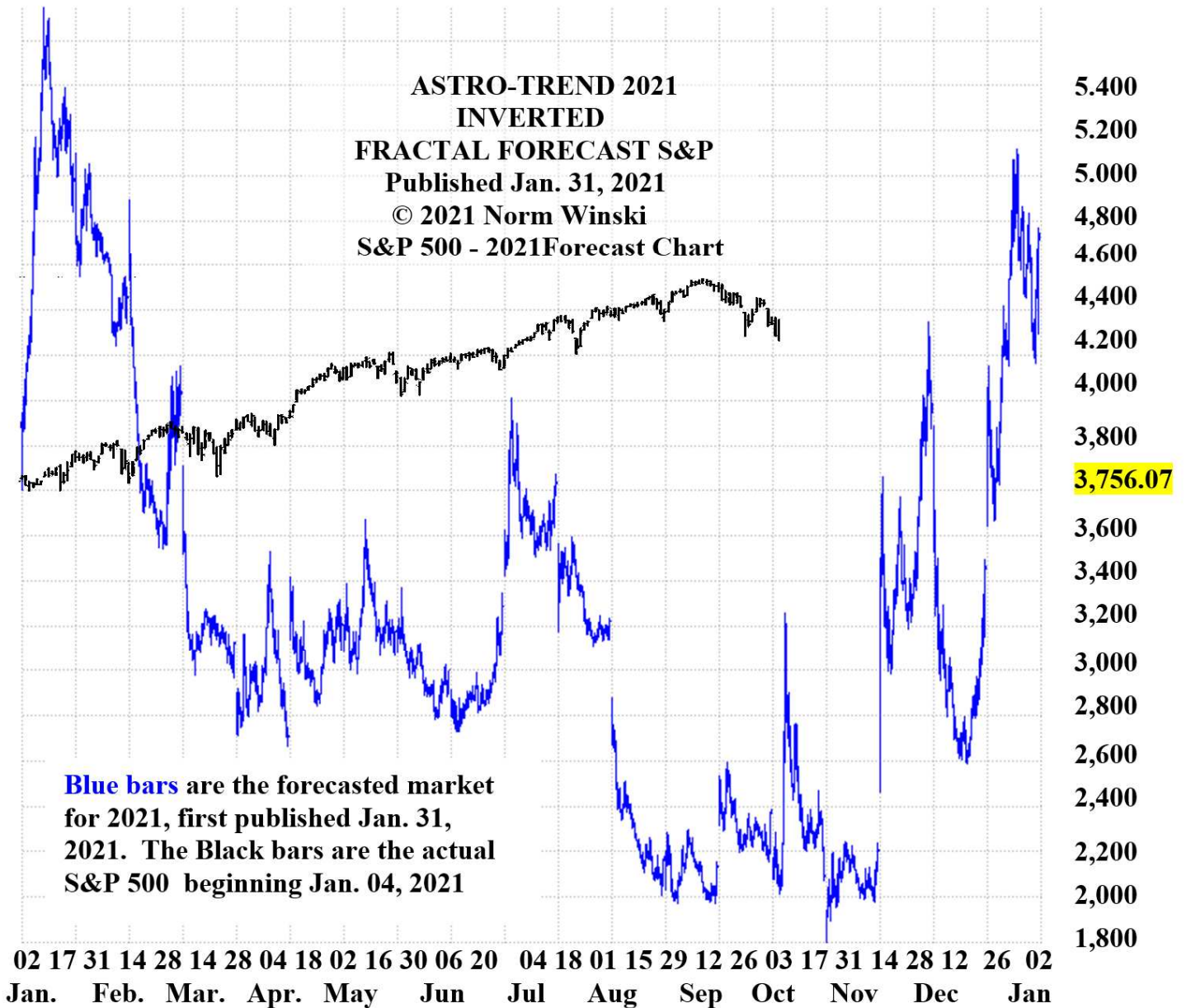


Blue bars are the forecasted market for 2021, first published Jan. 31, 2021.
 The **Black bars** are the actual S&P 500 beginning Jan. 04, 2021

02 17 31 14 28 14 28 04 18 02 16 30 06 20 04 18 01 15 29 12 26 03 17 31 14 28 12 26 02
 Jan. Feb. Mar. Apr. May Jun Jul Aug Sep Oct Nov Dec Jan

FUTURES AND OPTIONS TRADING IS NOT SUITABLE FOR ALL INVESTORS. THE RISK OF LOSS IS SUBSTANTIAL. AN INVESTOR COULD LOSE MORE THAN THE INITIAL INVESTMENT. PAST PERFORMANCE IS NOT NECESSARILY INDICATIVE OF FUTURE RESULTS.

Jan. Feb. Mar. Apr. May Jun Jul Aug Sep Oct Nov Dec Jan
 02 17 31 14 28 14 28 04 18 02 16 30 06 20 04 18 01 15 29 12 26 03 17 31 14 28 12 26 02



FUTURES AND OPTIONS TRADING IS NOT SUITABLE FOR ALL INVESTORS. THE RISK OF LOSS IS SUBSTANTIAL. AN INVESTOR COULD LOSE MORE THAN THE INITIAL INVESTMENT. PAST PERFORMANCE IS NOT NECESSARILY INDICATIVE OF FUTURE RESULTS.

Jan. Feb. Mar. Apr. May Jun Jul Aug Sep Oct Nov Dec Jan
 02 17 31 14 28 14 28 04 18 02 16 30 06 20 04 18 01 15 29 12 26 03 17 31 14 28 12 26 02

**ASTRO-TREND 2021
 FRACTAL FORECAST T-BONDS**

Published Jan. 01, 2021

© 2021 N. WINSKI

183-00

179-00

175-00

172-31

171-00

167-00

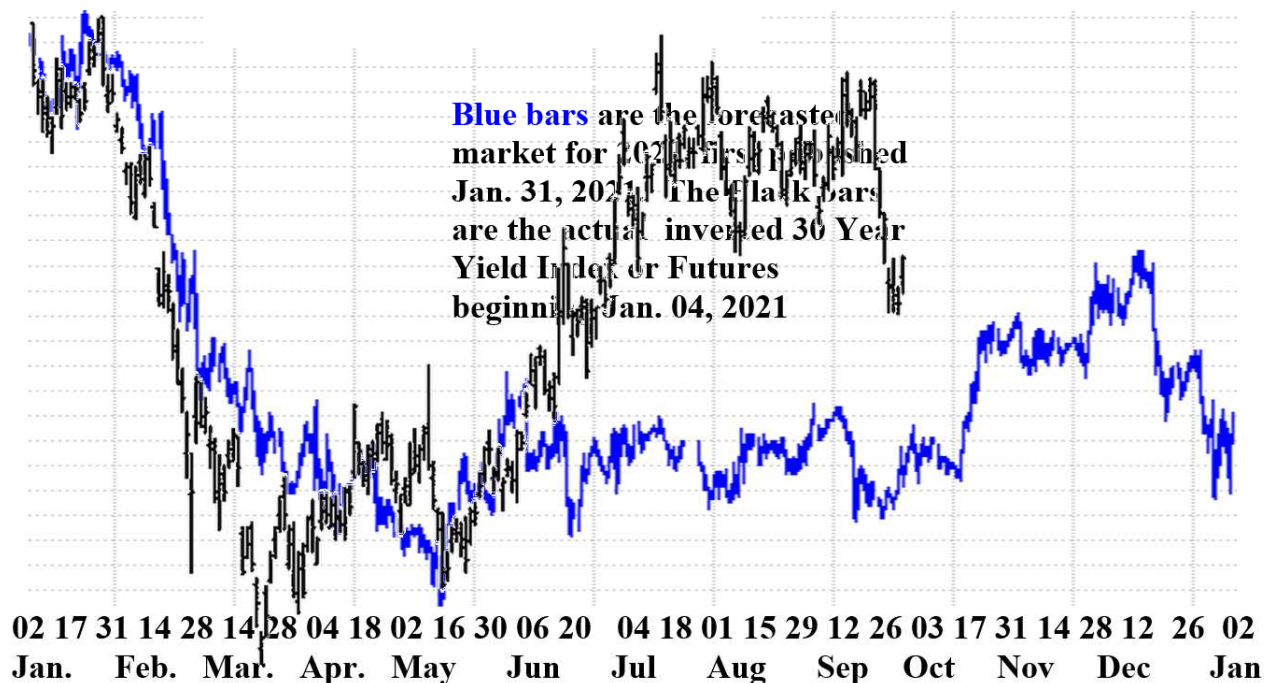
163-00

159-00

155-00

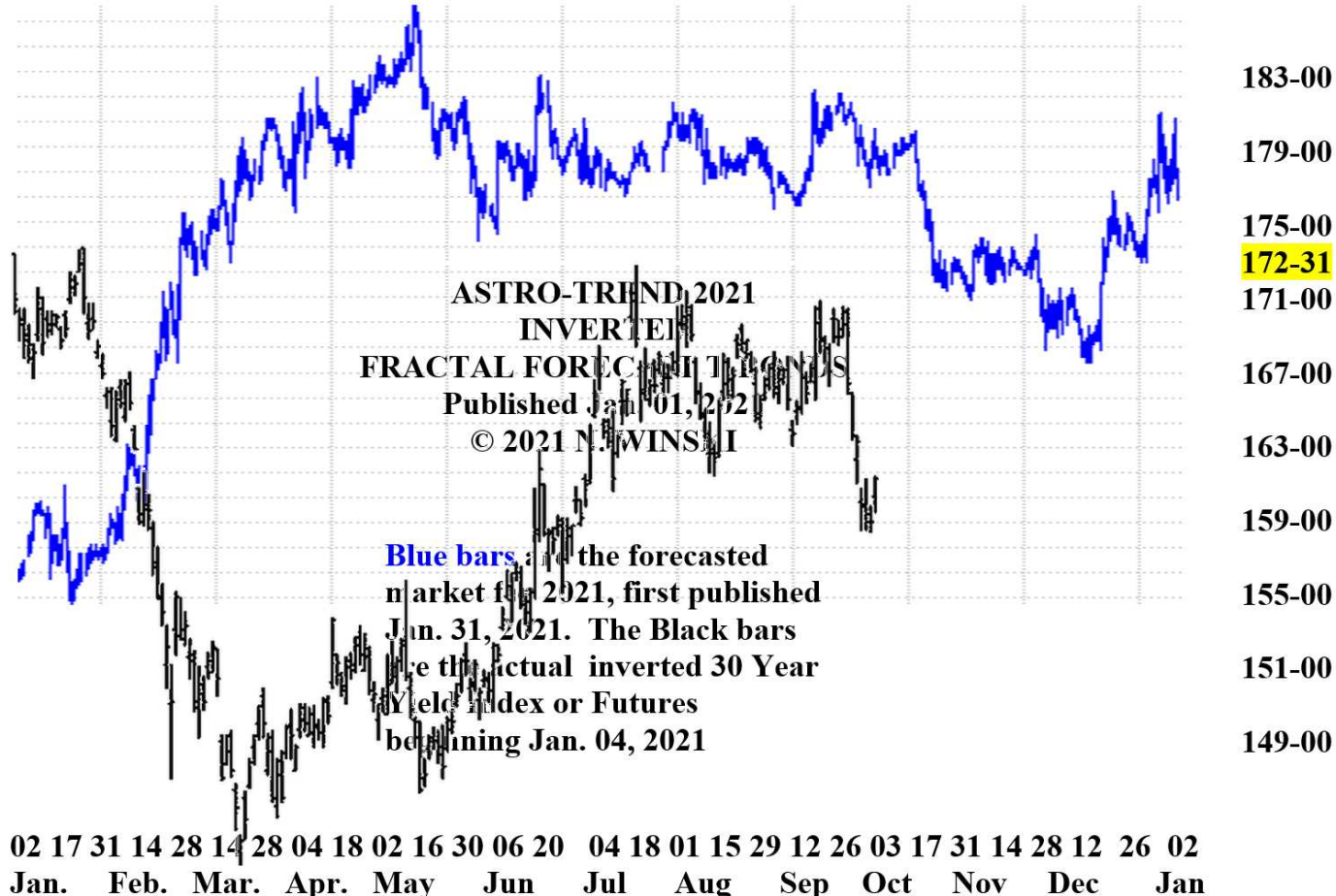
151-00

149-00



FUTURES AND OPTIONS TRADING IS NOT SUITABLE FOR ALL INVESTORS. THE RISK OF LOSS IS SUBSTANTIAL. AN INVESTOR COULD LOSE MORE THAN THE INITIAL INVESTMENT. PAST PERFORMANCE IS NOT NECESSARILY INDICATIVE OF FUTURE RESULTS.

Jan. Feb. Mar. Apr. May Jun Jul Aug Sep Oct Nov Dec Jan
 02 17 31 14 28 14 28 04 18 02 16 30 06 20 04 18 01 15 29 12 26 03 17 31 14 28 12 26 02



FUTURES AND OPTIONS TRADING IS NOT SUITABLE FOR ALL INVESTORS. THE RISK OF LOSS IS SUBSTANTIAL. AN INVESTOR COULD LOSE MORE THAN THE INITIAL INVESTMENT. PAST PERFORMANCE IS NOT NECESSARILY INDICATIVE OF FUTURE RESULTS.